

Comfortek[®] X1

Beyes[®]
CANADA

Beyes[®]
CANADA



Comfortek® X1 Series

Comfortek® X1 Series is the best dental operating system of its class.

Designed and built fully according to industrial standard and offering high quality using advanced production process. Comfortek® X1 Series is tailored for professionals in mind. It has all the features to provide optimal support with ergonomic design for better workflows, high quality standards in processing and design, and an unsurpassed value. Using our innovative power to provide more efficiency during treatments and improving the working environment.



Unsurpassed Value



Ergonomic Design

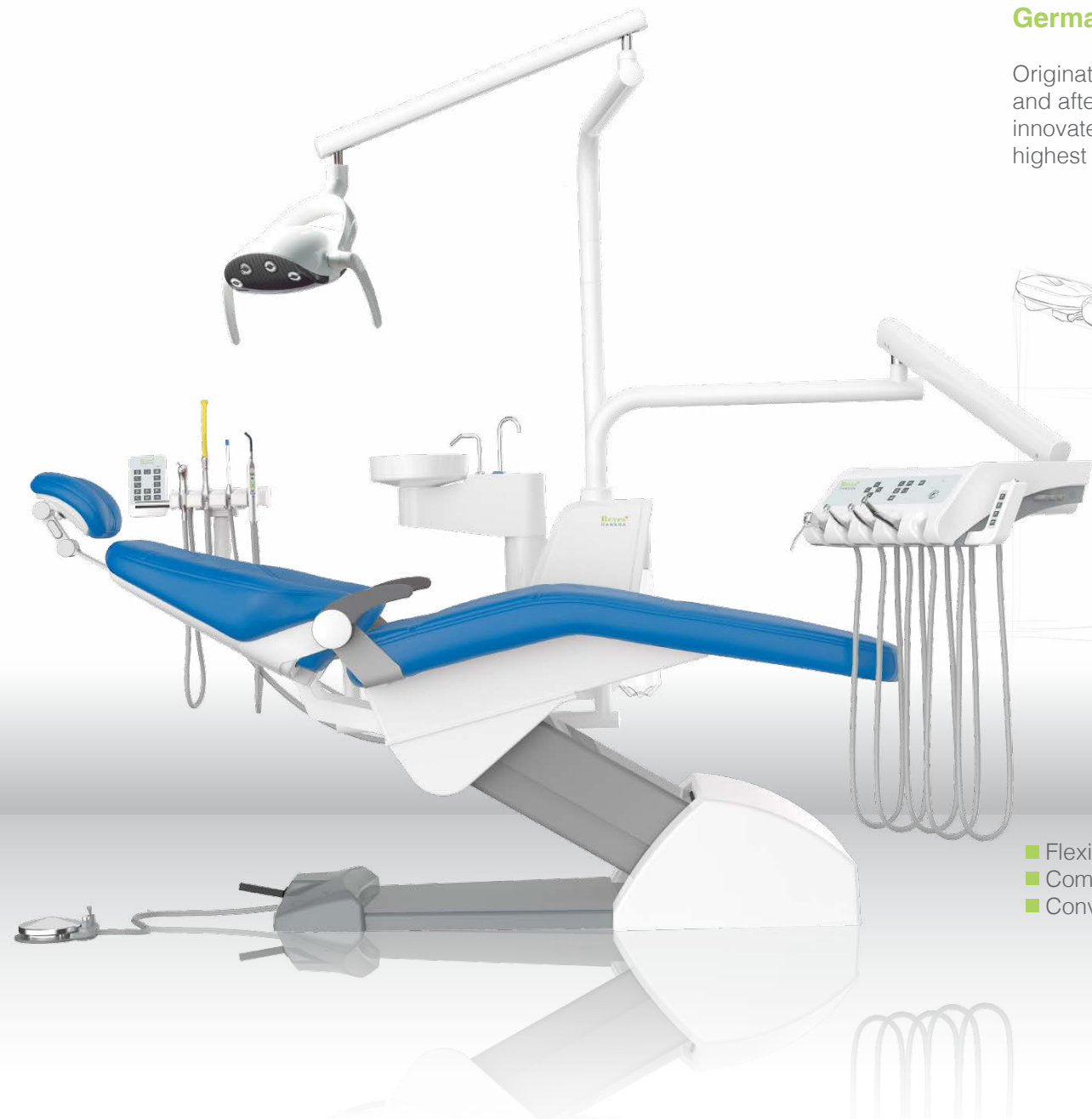


High Quality

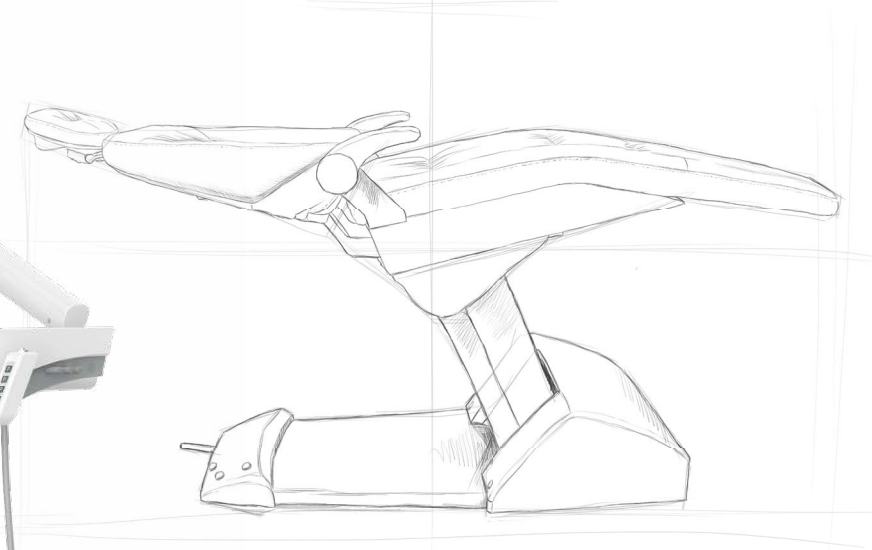


German Concept, Ergonomic Design

Originated from the design concept of German engineers and after more than 10 years of process improvement, the innovated Comfortek® X1 has a robust structure and meets highest ergonomic and safety standards.



- Flexible control with high reliability.
- Comfortable to use and durable.
- Convenient for cleaning and disinfection. More hygienic.



A Peace of Mind

Chair lock enables safe operation, avoid accident caused by unexpected movement of the chair position.



Reliable & Durable

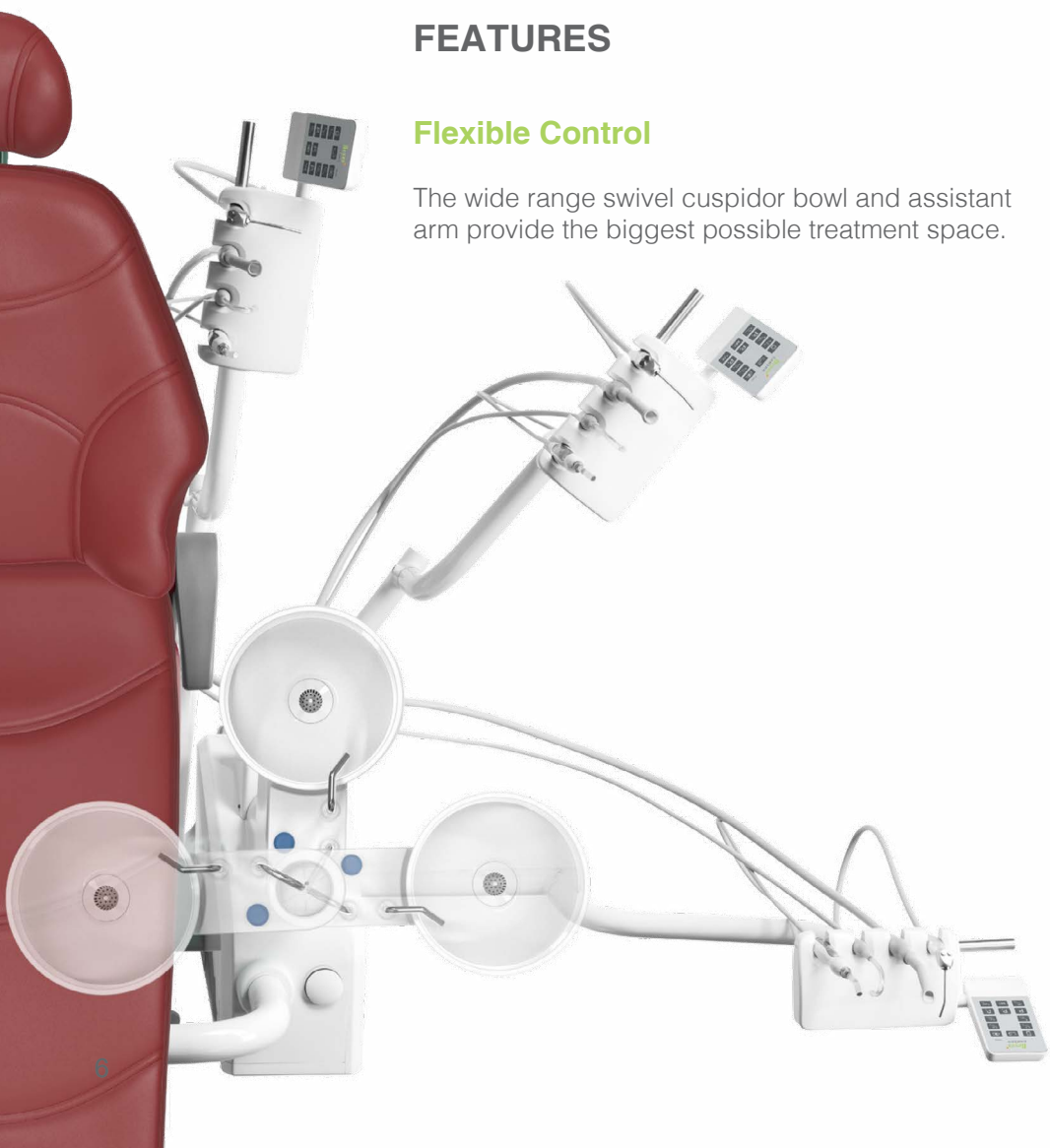
Comfortek® X1 has a robust structure, the main frame is composed of cast aluminum and steel parts. Electrostatic powder spraying and anti-rust treatment on the surface make all these metal parts have stronger anti-corrosion and anti-scratch qualities.



FEATURES

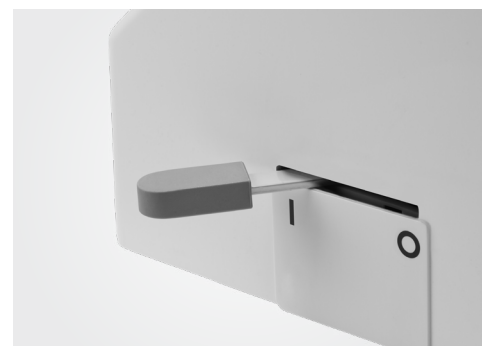
Flexible Control

The wide range swivel cuspidor bowl and assistant arm provide the biggest possible treatment space.



Full Foot-Control

Full foot-control operation to avoid cross contamination, the seat can be adjusted handsfree.



Main Switch

Main switch for all (air, water and electricity), avoids standby status of the chair and prolonging its life. It will reassure the unit is off when chair is not in use.



Simple and Quick Operation

The dentist element and assistant arm can have the control panels with the same functions, both of which are for simple and quick operation. The control panels are perfect for seamless cooperation between the dentist and assistant.



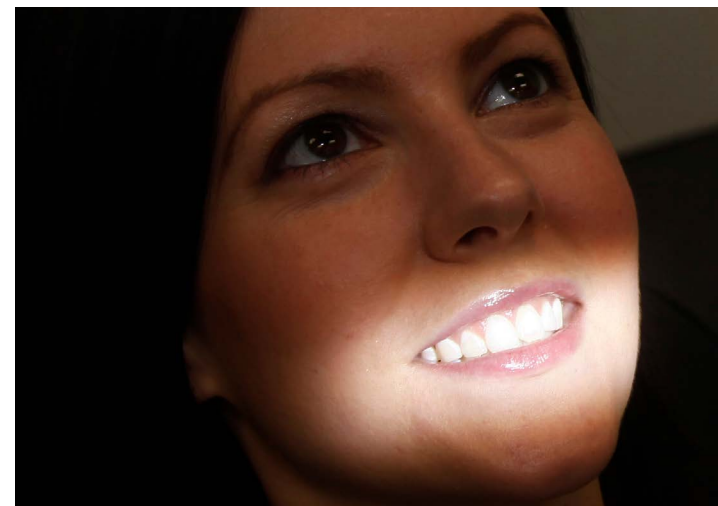
Complete Hygienic

The removable suction filter kit and 360° rotatable stainless water outlet make cleaning and disinfection easy and convenient.



One-Key Adjustment of Dentist Element

With the air lock switch on the handle of the dentist element, the unit can be adjusted to optimal position with a mere press of a button.

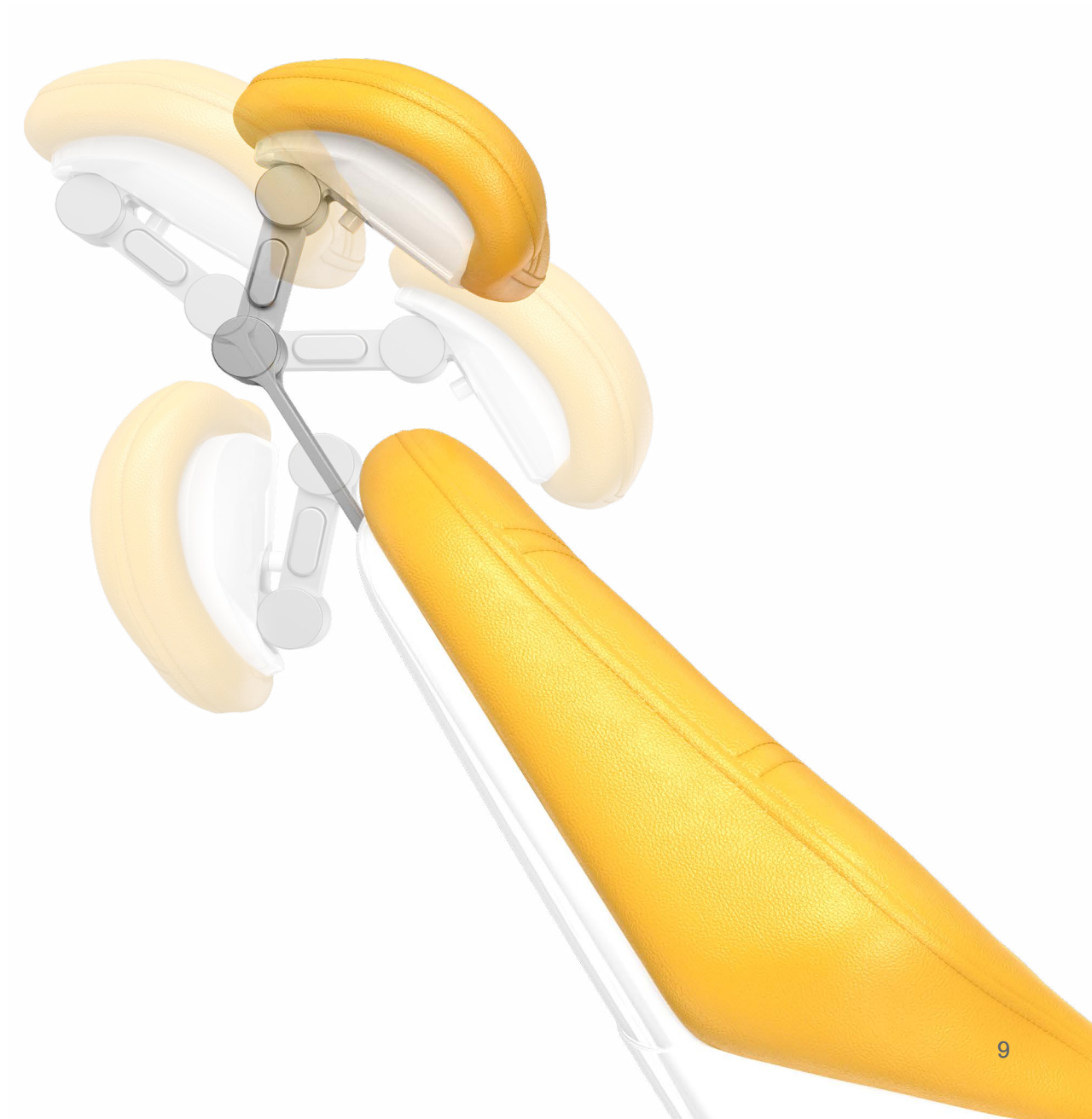


Smart LED Light

The smart LED light is pioneered to provide comfort on patient's eyes during treatment by avoiding direct light to their eyes. This intelligent features automatically turns off when the chair moves, and the LED light automatically turns on when the chair returns to the treatment position.

Comfort in Mind

With double-articulated headrest and comfortable seat, height can be raised and lowered freely in the range from 380mm to 780mm, including the last-seat-height memory function. It can be adjusted for the elderly, pregnant women and other patients with limited mobility to receive treatments.



Intelligent Doctor Stool

Wheels will automatically lock into place when you stand up. This helps to prevent tripping and falling caused by unwanted movement of the stool.



Back Arch Support

More comfortable by providing more back support and cushion for the dentist.



Perfect Combination of Height & Depression

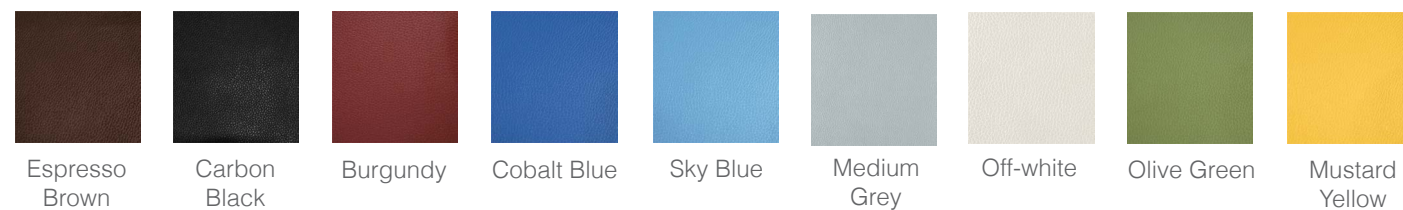
The front side of the seat cushion is raised to prevent the doctor from sliding forward during the treatment. The hips and legs are curved to prevent compression for extra comfort when you move and also provides stability.

Material Upgrade

- Minimalist design and easy to clean
- Exquisite sewing craftsmanship
- Strong and durable with excellent wear resistance
- High-density cushion, more comfortable to sit on



Colour Options: Sewn

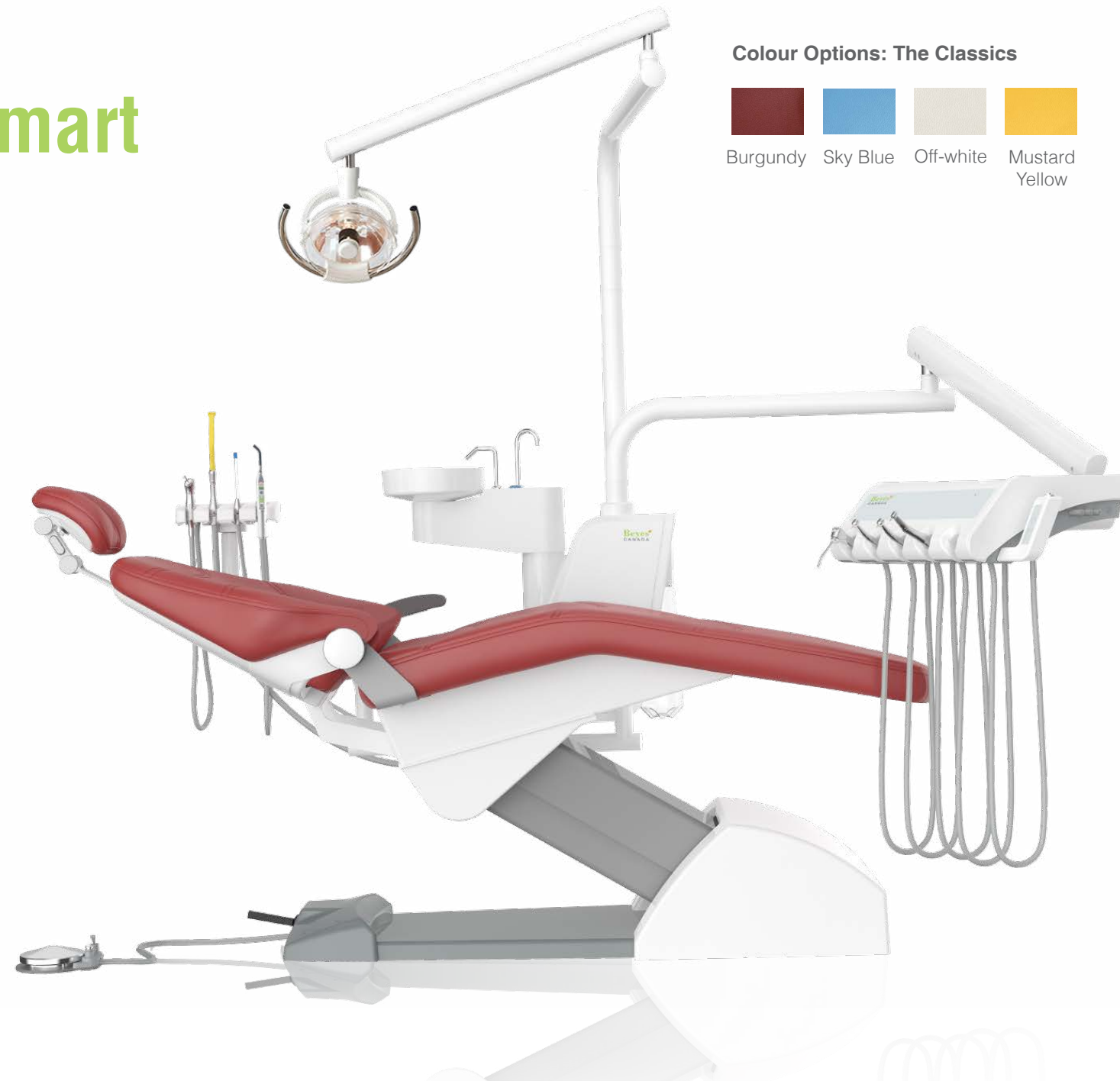


Comfortek X1® Smart

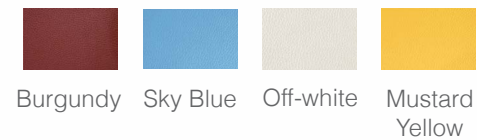
Dental Chair Package

Includes:

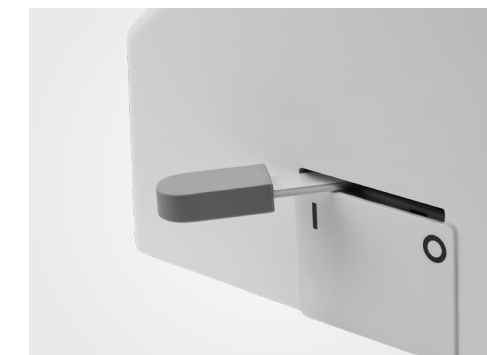
- Patient chair
- Delivery unit
- Cuspidor
- Left side arm rest
- Foot control operation unit
- M3 halogen operating light
- Premium doctor stool
- 1 Year full warranty
- 5 Years on motors



Colour Options: The Classics



Foot Control Operation Unit



Main Switch



M3 Halogen Operating Light



Premium Doctor Stool

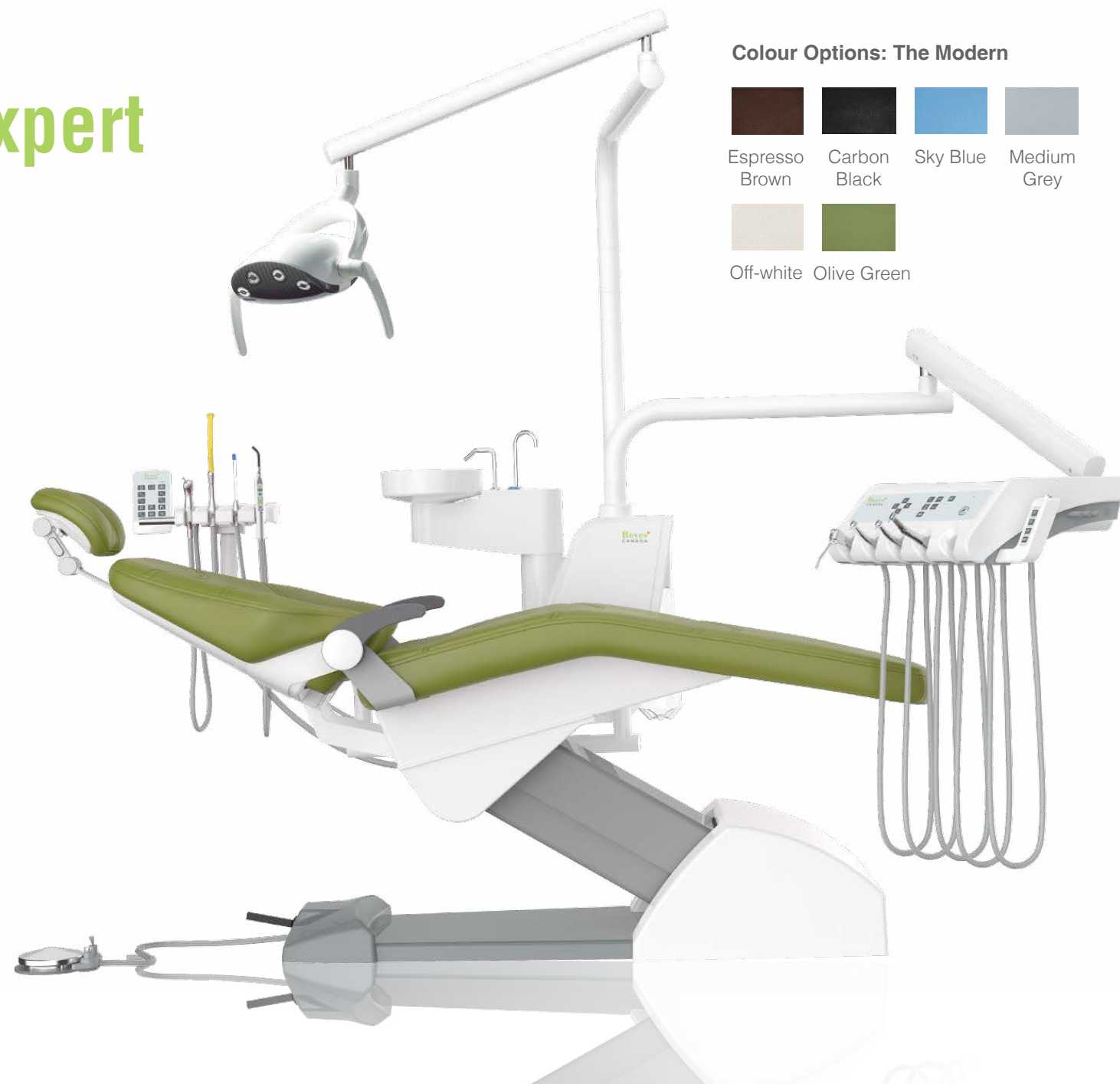
FEATURES

Comfortek X1[®] Expert

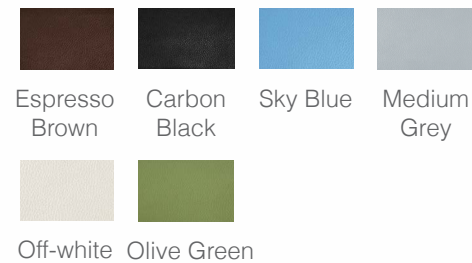
Dental Operating System

Includes:

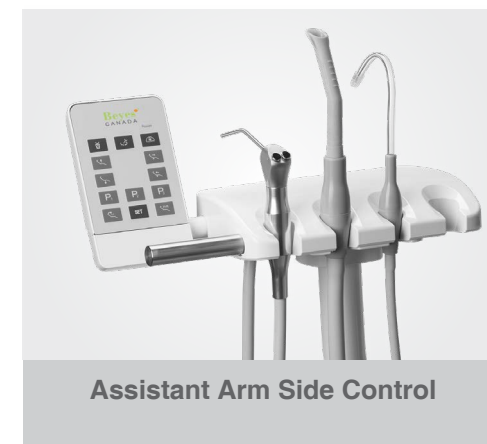
- Patient chair
- Delivery unit
- Cuspidor
- Two arm rests
- 4 way foot control
- Assistant arm side control
- Dentist control panel w/ memory position
- M5 LED operating light w/ sensor
- Built-in LED piezo scaler
- Premium doctor stool
- Premium assistant stool
- Premium Sewn Upholstery
- 1 Year full warranty
- 5 Years on motors



Colour Options: The Modern



4 Way Foot Control



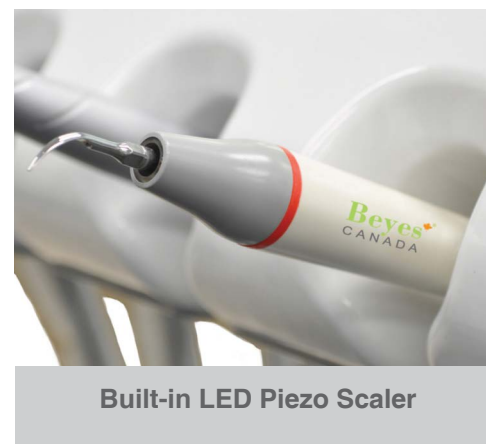
Assistant Arm Side Control



Dentist Control Panel w/ Memory Position



M5 LED Operating Light w/ Sensor



Built-in LED Piezo Scaler



Premium Doctor Stool
Premium Assistant Stool

FEATURES

Comfortek X1[®] Master

Comprehensive & Advanced Technology

Includes:

- Patient chair
- Delivery unit
- Cuspidor
- Two arm rests
- 4 way foot control
- Dentist and assistant control panels w/ memory position
- M8 LED operating light (yellow and white light switch)
- Airlock switch with 4 way joystick
- 2 fibre optic 6 hole tubing
- Built-in electric monitor
- Premium doctor stool
- Premium assistant stool
- Premium Sewn Upholstery
- 1 Year full warranty
- 5 Years on motors



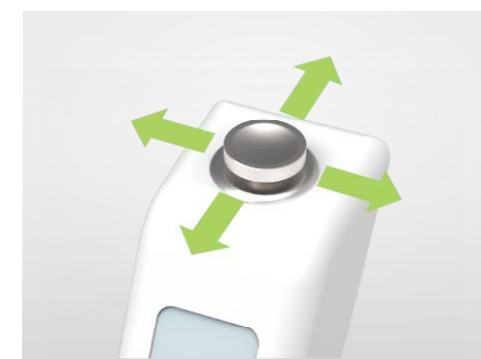
Colour Options: The Bold



Assistant Control Panels
w/ Memory Position



M8 Led Operating Light
(yellow and white light switch)



Airlock Switch
w/ 4 Way Joystick



2 Fibre Optic 6 Hole Tubing



Built-In Electric Monitor



Premium Doctor Stool
Premium Assistant Stool

FEATURES

Multimedia System

1. Monitor Arm

Install either a monitor or TV of your choice on this supportive media arm to complete your modern operatory.

2. Monitor

A high resolution monitor is mounted directly on the light post which will enhance communication with patients.

3. Intraoral Camera

A crystal clear intraoral camera is fully integrated into the delivery system, so your camera will always be at your fingertips. Your patients will be well-educated by seeing the images on the screen.



Comfortek X1 Configurations

Standard Configurations			
	Smart	Expert	Master
Patient Chair			
Electric System	●	●	●
Double-Articulated Headrest	●	●	●
Chair-Instrument Lock	●	●	●
4 Way Foot Control	●	●	●
Round Foot Pedal	●	●	●
Foot Control Operation Switches	●	●	●
Upholstery	Sewn	Premium Sewn	Premium Sewn
Left Armrest	●	●	●
Right Armrest		●	●
Anti-collision system		●	●
Water Unit			
Air & Water venturi system	●	●	●
Fresh water bottle	●	●	●
Removable Cuspidor Bowl	●	●	●
Assistant Element			
Saliver Ejector (SE) x1	●	●	●
High Volume Evacuation (HVE) x1	●	●	●
Air/Water Syringe	●	●	●
Assistant Side Control Panel		●	●
Dentist Element			
Dentist Side Control Panel	●	●	●
Air/Water Syringe	●	●	●
Ultrasonic Scaler (Built In)		●	●
Air Lock Switch with 4 Way Joystick			●
Handpiece Light Source System			2 x 6-Pin
Electric Motor (Built In)			6-Pin
Dental Light	M3 Halogen Light	M5 LED Light	M8 LED Light
Premium Doctor Stool	●	●	●
Premium Assisntant Stool		●	●

Optional Configurations



Proportional Foot Control



Air Lock Switch with 4 Way Joystick



Additional Steel Base Plate



Multimedia System



Monitor Arm



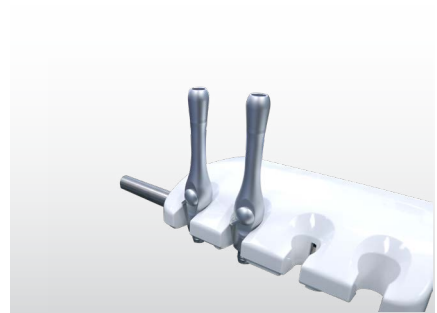
Scaler



Quick Disconnect (Air or Water) x1



Foot Control Operation Switches



Second HVE Suction



Electric Motor



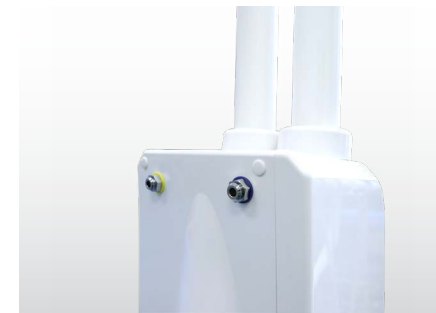
Right Armrest



Handpiece Light Source System



Curing Light



Quick Disconnects (Air and Water) x2

More:

- 6-Pin Handpiece System x1
- 6-Pin Handpiece System x2
- Utility Ground Center

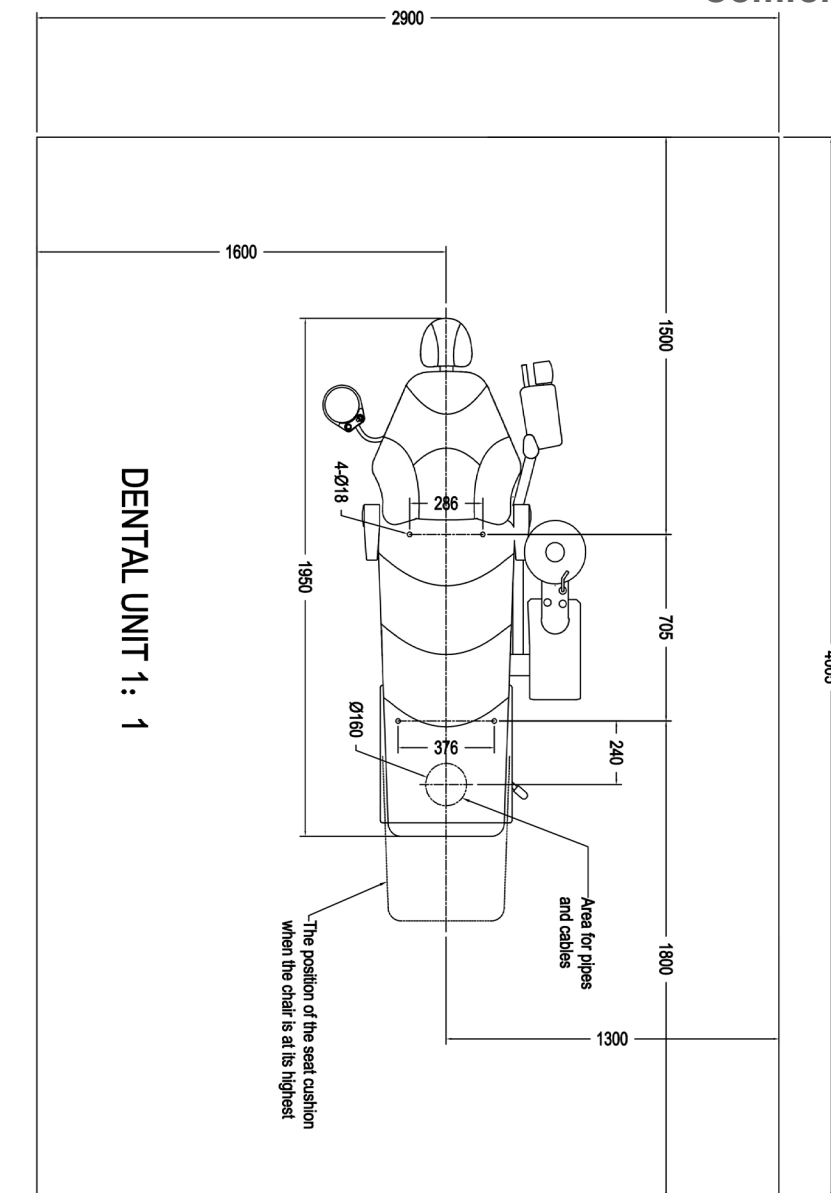
Comfortek® X1 Series

Recreate the Standard!



Technical Specifications

Input power supply	AC 110-120 V; AC 220-230 V; 50 Hz/60 Hz
Water pressure	2.5-6.0 bar
Water flow	≥10L/min
Air supply pressure	5.5-7.5 bar
Air consumption	Dry & Wet Suction ≥55L/min (5.5-7.5 bar)
Water consumption	Air Negative Pressure ≥130L/min (5.5-7.5 bar)
Dental light illuminance	8000-25000 lux
Maximum weight	185 kg
Patient chair carrying capacity	150 kg
Patient chair lowest - highest position	380-780 mm





Beyes is the largest Canadian dental handpiece manufacturer with its corporate office located in Toronto. By taking advantage of the highly educated workforce and well-established manufacturing chain in Southern Ontario, Beyes has revolutionized the dental industry with groundbreaking advancements for precision dental instrumentations.

Our Vision: To create "The Next Standard" for dentistry.

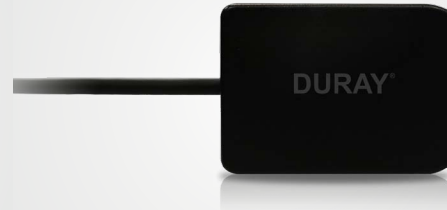
Comprehensive Product Portfolio



Treatment Centers



Electric Motor



X-Ray Sensor



LED High Speed Handpieces



Beyes Dental Canada Inc.
23-595 Middlefield Rd
Scarborough, ON M1V 3S2
Canada
Tel: 1-855-603-1888
Email: info@beyes.ca
Website: www.beyes.ca



Lotus NL B.V.
Koningin Julianaplein 10, le Verd,
2595AA, The Hague,
Netherlands

Your Dealer for Beyes Products



Scan the QR code
for more information

Printed in Canada
File #: ENB044R4
Rev.4/09.16.24

© Beyes Canada Inc 2024. All Rights Reserved.
Specifications are subject to change without notice.
All brands are holders of their respective trademarks.
All Beyes products are manufactured in strict compliance
with Health Canada regulations ensuring quality.
Manufacturing facility is ISO 13485 certified under the
Medical Device Single Audit Program (MDSAP).