

HANDLING

Introducing New & Improved

# Tetric EvoCeram®

Direct Composite Technology has Evolved!

ESTHETICS

CLINICALLY PROVEN



**Tetric EvoCeram®**  
NANO-OPTIMIZED COMPOSITE RESTORATIVE



**Tetric EvoCeram®**

## POLYMERIZATION ON DEMAND

**Tetric EvoCeram offers industry leading working time and curing time.**

Tetric EvoCeram gives you both: the ability to contour the material for an extended length of time and fast curing time.

A special additive has been incorporated into the photo-initiator system of Tetric EvoCeram causing the material to be less reactive to ambient light (eg, operator light, etc.), while being highly reactive to curing lights (eg, light in the wavelength range of 400-500 nm).

**Dentists can gain a substantial advantage by benefiting from:**

**Longer working times**

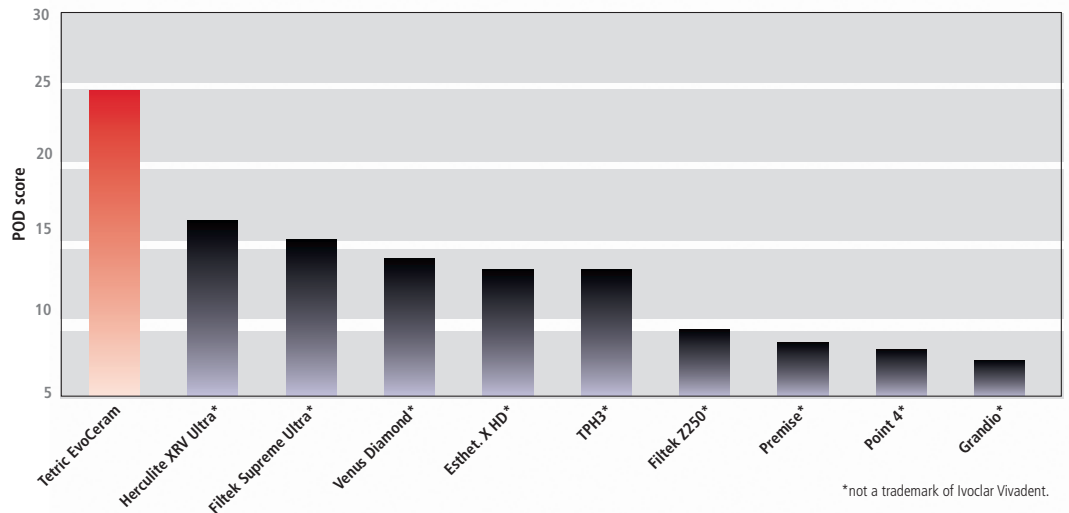
**Faster curing times**



### **Polymerization on Demand (POD)**

The POD score measures the combination of working time and curing time. A high score indicates more control over the polymerization of the material.

$$\text{POD} = \frac{\text{Working Time}}{\text{Polymerization Time}}$$



HANDLING



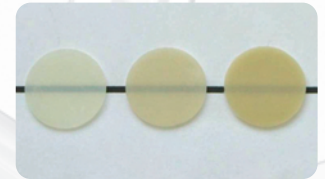
**Tetric EvoCeram®**

## NATURAL SHADE BLEND

**Tetric EvoCeram's highly esthetic appearance and natural shade blend is a result of nano-fillers and refractive index technology.**

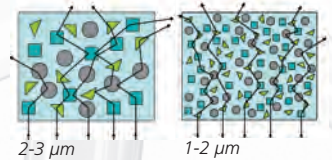
### Translucency

Tetric EvoCeram features a high translucency of approximately 20% prior to shading facilitating a more natural blend with surrounding dentition. Tetric EvoCeram is available in three levels of translucency providing an esthetic solution in all situations.



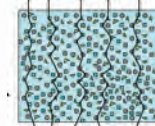
Translucency (T, A2, A3.5 Dentin)

### Light Scattering



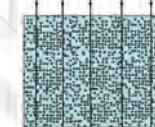
2-3 μm

1-2 μm



1 μm

### No Scattering



550 nm

### Filler size

Nano-sized fillers in Tetric EvoCeram are smaller than visible light. As a result, light is able to pass through the composite similar to enamel further enhancing the true-to-nature characteristics of Tetric EvoCeram.

### Refractive index

The refractive index of the fillers and monomers used in Tetric EvoCeram are matched creating a true chameleon effect.



Refractive index

Glass rod is visible when refractive indexes do not match.

Glass rod is invisible when refractive indexes match.

### Competence in Composites



OpraDam® Plus



AdheSE® One F



Tetric EvoFlow®



Tetric EvoCeram®



bluephase®



OpraPol® Next Generation

ESTHETICS



**Tetric EvoCeram®**

## LONG-TERM DURABILITY

CLINICALLY PROVEN

**The clinical success of Tetric EvoCeram has been proven by numerous clinical studies.**

**Four successful studies reporting 5-year results:**

“After 5 years, none of the restorations examined had been lost. Tetric EvoCeram is a good clinical choice for anterior restorations.”

**Dr Carlos Munoz, Dr James Dunn,  
Loma Linda University, California, USA**

“Data gathered in this study show that Tetric EvoCeram exhibits excellent clinical performance even after having been in place for several years”

**Prof. Dr Paul Lambrechts,  
University of Leuven, Belgium**

“Tetric EvoCeram is a good clinical choice for anterior restorations.”

**Prof. Dr Antonio Cerutti,  
University of Brescia, Italy**

“After 5 years, all restorations showed good clinical behavior. Tetric EvoCeram can be regarded as a very reliable restorative material.”

**Dr Arnd Peschke,  
Ivoclar Vivadent AG, Schaan, Liechtenstein**



*before*



*directly after placement*



*at 6-year recall*

*Dr Arnd Peschke*

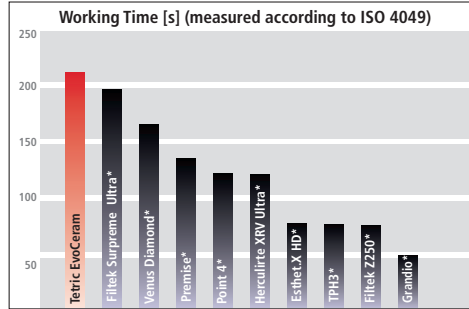




# Tetric EvoCeram®

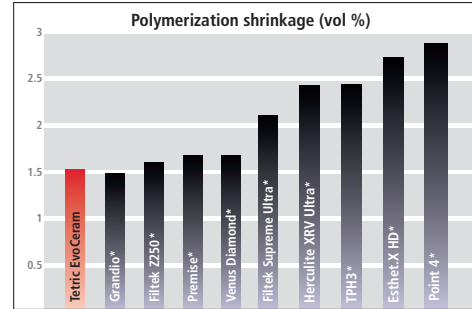
## OUTSTANDING PHYSICAL PROPERTIES

Tetric EvoCeram offers longer working time.



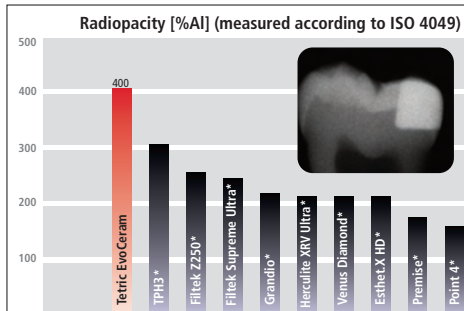
Source: R&D Ivoclar Vivadent AG, Schaan, Liechtenstein  
\*not a trademark of Ivoclar Vivadent.

Tetric EvoCeram provides low polymerization shrinkage resulting in improved marginal integrity.



Source: R&D Ivoclar Vivadent AG, Schaan, Liechtenstein  
\*not a trademark of Ivoclar Vivadent.

Tetric EvoCeram offers extremely high radiopacity for fast, easy detection on x-rays.



Source: R&D Ivoclar Vivadent AG, Schaan, Liechtenstein  
\*not a trademark of Ivoclar Vivadent.

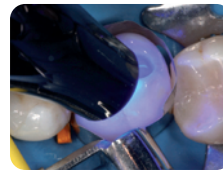
### Clinical Case by Dr Arnd Peschke



Initial situation: Leaking restoration margins and secondary cervical caries.



After isolation and application of a matrix (Optra Matrix), the cavity is conditioned and coated with an adhesive (Adhese One F).



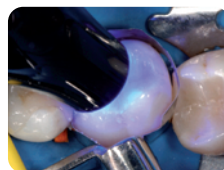
The adhesive is light-cured (bluephase G2®).



The proximal wall of the restoration is built up with Tetric EvoCeram. In the process, the Class II cavity turns into a Class I cavity.



After light-curing the proximal increment, the first section of the occlusal surface is reconstructed, while the characteristics of the natural morphology are taken into account.



The first occlusal increment is light-cured to minimize the shrinkage stress and facilitate anatomically correct contouring.



A second occlusal increment is applied to complete the design of the occlusal surface.



After an occlusal check, the restoration is polished.

# Tetric EvoCeram®

## Direct Composite Technology has Evolved!

### DELIVERY FORMS

#### SYRINGES



#### CAVIFILS



#### KITS

##### 638378 Tetric EvoCeram Syringe Assortment

Contents:

8 - syringes (3 g each) Tetric EvoCeram  
(1 each in shades; A1, A2, A3, A3.5, B1,  
A2 Dentin, Translucent, Bleach L)  
Shade Guide

##### 638381 Tetric EvoCeram Cavifil Assortment

Contents:

40 - cavifils (0.2 g each) Tetric EvoCeram  
(5 each in shades; A1, A2, A3, A3.5, B1,  
A2 Dentin, Translucent, Bleach L)  
Shade Guide

##### 638380 Tetric EvoCeram Syringe Starter Kit

Contents:

4 - syringes (3 g each) Tetric EvoCeram  
(1 each in shades; A1, A2, A3, B1)

##### 638379 Tetric EvoCeram Cavifil Starter Kit

Contents:

20 - cavifils (0.2 g each) Tetric EvoCeram  
(5 each in shades; A1, A2, A3, B1)

#### REFILLS

##### Tetric EvoCeram Syringe Refills

Contents:

1 – syringe (3 g) Tetric EvoCeram

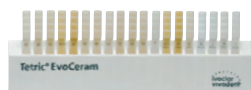
##### Tetric EvoCeram Cavifils Refills

Contents:

20 – cavifils (0.2 g each) Tetric EvoCeram

590312 Shade A1  
590313 Shade A2  
590314 Shade A3  
590315 Shade A3.5  
590316 Shade A4  
637547 Shade B1 **NEW SHADE!**  
590317 Shade B2  
590318 Shade B3  
590319 Shade C1  
590320 Shade C2  
590321 Shade C3  
637548 Shade D2 **NEW SHADE!**  
590322 Shade D3  
637549 Shade A2 Dentin **NEW SHADE!**  
590323 Shade A3.5 Dentin  
590324 Shade A4 Dentin  
590325 Shade B2 Dentin  
590326 Shade T  
590327 Shade BleachXL  
590328 Shade Bleach L  
590329 Shade Bleach I  
590330 Shade Bleach M

590331 Shade A1  
590332 Shade A2  
590333 Shade A3  
590334 Shade A3.5  
590335 Shade A4  
637354 Shade B1 **NEW SHADE!**  
590336 Shade B2  
590337 Shade B3  
590338 Shade C1  
590339 Shade C2  
590340 Shade C3  
637355 Shade D2 **NEW SHADE!**  
590341 Shade D3  
637356 Shade A2 Dentin **NEW SHADE!**  
590342 Shade A3.5 Dentin  
590343 Shade A4 Dentin  
590344 Shade B2 Dentin  
590345 Shade T  
590346 Shade Bleach XL  
590347 Shade Bleach L  
590348 Shade Bleach I  
590349 Shade Bleach M



#### Shade Guide

590292 Tetric EvoCeram Shade Guide

100% CUSTOMER SATISFACTION  
GUARANTEED!

[ivoclarvivadent.com](http://ivoclarvivadent.com)

©2011 Ivoclar Vivadent, Inc.  
Tetric EvoCeram, bluephase G2, Adhese One F, Tetric EvoFlow,  
OptraPol and Optra Matrix are registered trademarks of  
Ivoclar Vivadent.  
638013 Rev. 01 2/2011

#### United States

175 Pineview Drive  
Amherst, NY 14228  
716.691.0010  
800.533.6825  
Fax: 716.691.2285  
mail@ivoclarvivadent.com

#### Canada

2785 Skymark Avenue, Unit 1  
Mississauga, Ontario L4W 4Y3  
905.238.5700  
800.263.8182  
Fax: 905.238.5711  
mail@ivoclarvivadent.com

**ivoclar**  
**vivadent**  
passion vision innovation