



ELARA | SPECTRA

# CAM▶X<sup>®</sup> Elara & Spectra

Dental's Perfect Pair.

**AIR**  
**TECHNIQUES** equipped for life<sup>®</sup>

The new CamX family of products from Air Techniques provides invaluable support for dental treatments and enhances patient understanding of necessary treatments. When patients better understand the need for treatment options it can often lead to more informed decisions, which means CamX products can also help improve your case acceptance and return on investment. From communication and caries diagnostics to documentation and tracking progress, we've got you covered.



The CamX Elara intraoral camera and CamX Spectra caries detection aid were designed with you in mind and they are the perfect pair to tell your patients the complete story of their oral health.



## PRECISE DESIGN, PREDICTABLE RESULTS

### Modern Sleek Design

Beautifully shaped, not only do its features distinguish CamX, it also satisfies all ergonomic demands

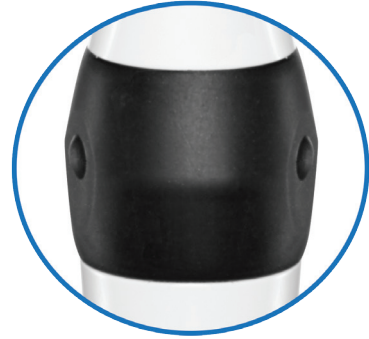


### Tactile Image Capture Confirmation

A short vibration tells you that an image has been captured

### Capture on Release

Unique capture-upon-release feature makes capturing steady, sharp images as easy as 1-2-3



### Ergonomic Image Capture

Capture buttons located on the top and bottom of the camera for comfortable image capture of the maxillary or mandibular arches

### Automatic Activation/Deactivation

A motion sensor switches the camera on and off and ensures efficient use while improving workflow

### Flexible and Tangle-Resistant Cable

Easy to manipulate without coiling of the cable



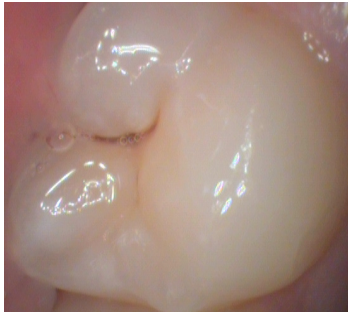
### Small Footprint and Lightweight

Sturdy lightweight design fits comfortably in the hand

### Multi Operatory Use

Camera is easily transported for the ability to use in more than one treatment room

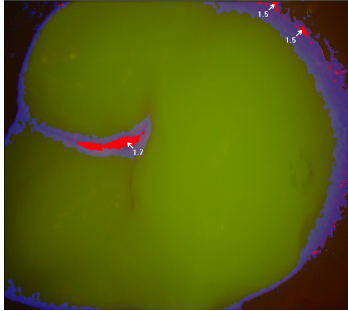




## CamX ELARA FEATURES

Designed with all ergonomic demands in mind, this sophisticated intraoral camera will improve patient communication, leading to higher case acceptance and better tracking of treatment.

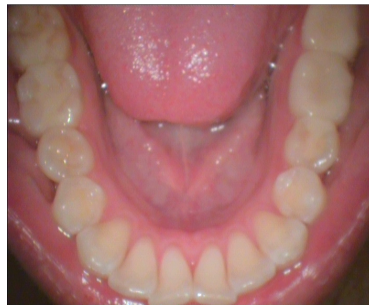
- Excellent Image Quality: 8 White Light LEDs positioned around the lens provide bright homogeneous image quality.
- Always in focus from 5-35mm making the camera easy to use and eliminating the need for further adjustments.



## CamX SPECTRA FEATURES

The only caries detection aid that uses fluorescence technology to visualize and discover caries earlier, as well as plaque and calculus.

- 4 Violet LEDs stimulate metabolic products found in cariogenic bacteria, causing them to glow red while healthy enamel glows green.
- Caries and plaque filters in the imaging software show caries activity by means of a color scale and numeric evaluation.
- Repeatable and reliable documentation for monitoring progress of caries due to the 8mm spacer.



Intraoral images taken with CamX Elara. These images have not been edited in any way.

## MOTIVATE PATIENTS TO SAY YES: PATIENT CASE ACCEPTANCE AND CASE MANAGEMENT



Benefits from patient communication go beyond increased case acceptance! Remind patients why they chose you with before and after comparisons, monitor and motivate the patient's hygiene progress, amplify your brand by using the latest technology and so much more!

- Makes it easier to persuade patients to approve needed treatment, even when there's no pain or discomfort.
- Early detection means pinpointing problems at an earlier stage, which traditionally go undetected. This leads to more conservation and less excavation.
- Helps you explain how treatment now can avoid future procedures that might be painful, expensive and more invasive.



# CAMX<sup>®</sup> Elara

## SPECIFICATIONS

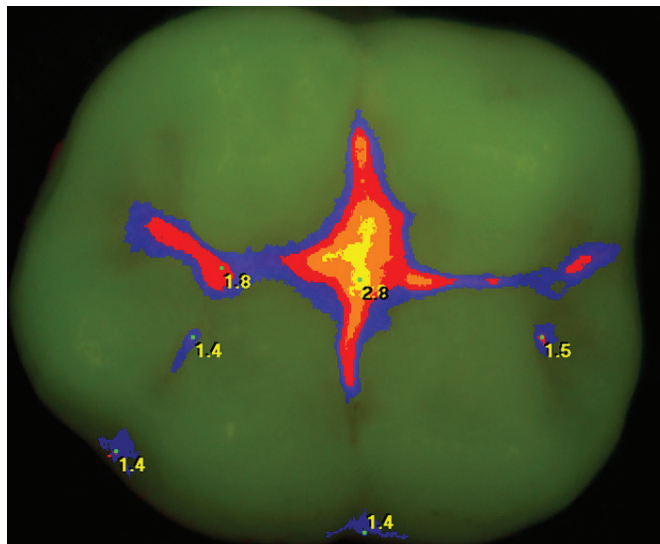
<b>Part Number</b>	J2100
<b>Dimensions (LxD)</b>	7.5" x 1.0" (Handpiece)
<b>Video Outputs</b>	USB 2.0
<b>Weight</b>	1.7 oz
<b>Resolution</b>	704 x 576 Pixels
<b>Illumination</b>	8 White Light LEDs
<b>White LED Lamps Image</b>	Normal, Not Mirrored
<b>Package Includes</b>	Elara Handpiece, 20 Camera Sheaths, 1 USB Umbilical, 1 Chair side Handpiece Holder, Cleaning Cloth
<b>Warranty</b>	24 Months



# CAMX<sup>®</sup> Spectra

## SPECIFICATIONS

<b>Part Number</b>	J2300
<b>Dimensions (LxD)</b>	7.5" x 1.0" (Handpiece)
<b>Video Outputs</b>	USB 2.0
<b>Weight</b>	1.7 oz
<b>Package Includes</b>	Spectra Handpiece, 20 Camera Sheaths, 5 Positioning Spacers, 1 USB Umbilical, 1 Chair side Handpiece Holder, Cleaning Cloth
<b>Warranty</b>	24 Months





[airtechniques.com](http://airtechniques.com)

For over 50 years, [Air Techniques](http://airtechniques.com) has been a leading innovator and manufacturer of dental products. Our priority is ensuring complete satisfaction by manufacturing reliable products and providing excellent customer and technical support. Whether the need is merchandise, digital imaging or utility room equipment, Air Techniques can provide the solution via our network of authorized professional dealers. Proudly designed, tested and manufactured in the United States, our products are helping dental professionals take their practices to the next level.

Air Techniques' products are distributed through authorized dealers only.



CORPORATE HEADQUARTERS  
1295 Walt Whitman Road  
Melville, New York 11747- 3062  
800-247-8324

CamX is a registered trademark  
of Air Techniques, Inc.  
© Copyright 2018  
PN 9922-481, Rev. B

**AIR**  
**TECHNIQUES** equipped for life®