

G-Cem™

Setting a new standard
in self-adhesive
cement technology

From GC America, the world's leading dental cement company, comes the latest innovation in universal resin luting cement: G-Cem™. Easy to use, with a fast, one-step application process. Reliably strong, with a high bond strength to enamel and dentin. Completely versatile, for use with all crowns, bridges, inlays, onlays and endodontic posts.

G-Cem's™ advanced formulation offers:

- **Unparalleled ease of use** – self-adhesive, one-step application with easy clean-up
- **High bond strength** – superior bond strength to enamel and dentin with a fast set time and reliable results
- **No risk of post-op sensitivity** – unique hydrophilic chemistry provides a strong seal and exceptional patient comfort
- **Dual-cure chemistry** – provides good adhesion... will stay in place permanently
 - **Less technique sensitivity than other resin cements** – moist or dry, G-Cem™ does it all
 - **High esthetic quality** – better color stability and resistance to external stains than RelyX™ Unicem and Maxcem™*
 - **Maximum fluoride release** – the highest fluoride release of any self-adhesive resin cement*

G-Cem™

For every crown,
every time

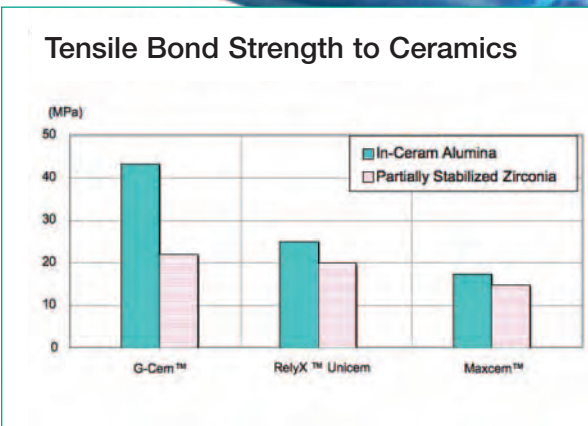
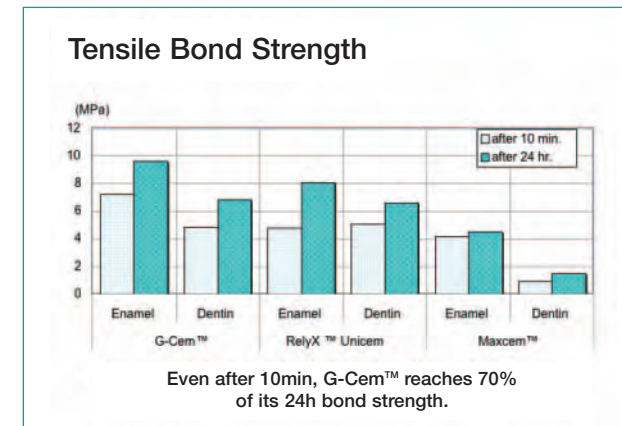
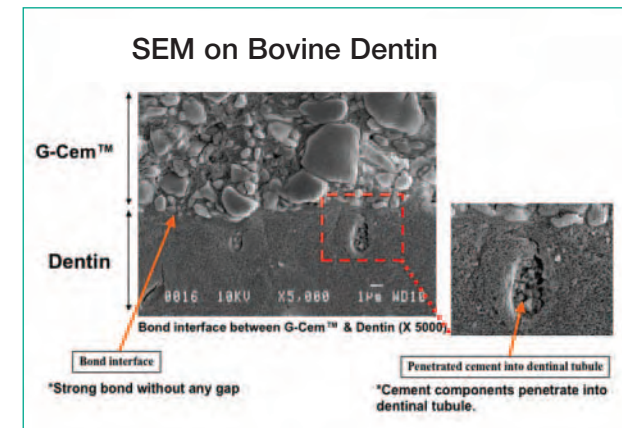
G-Cem's™ easy-to-use, versatile formula makes it the ideal choice for a wide range of dental restorations, including:

- Metal and porcelain-fused-to-metal (PFM) crowns, bridges, inlays and onlays
- All-ceramic and composite crowns, bridges, inlays and onlays (compatible with CEREC®, Empress®, e.max®, Procera®, Cercon® and other systems)
- Prefabricated metal, fiberglass and ceramic endodontic posts

Hydrophilicity means no post-op sensitivity and outstanding patient comfort.

G-Cem™ combines the proven technologies of 7th-generation resin adhesives with the exceptional properties of hydrophilic, biocompatible resin-modified glass ionomer cements. It's the first resin cement to contain water and functional monomers (4-MET and Phosphoric ester) for self-adhesive properties, rather than polyalkenoate acid. As a result, G-Cem's™ hydrophilicity causes effective penetration into the dentinal tubules (as shown in the SEM below). After penetration, G-Cem™ sets tightly and becomes hydrophobic.

The result: unlike most other resin cements, G-Cem™ forms a strong chemical bond, sealing and protecting the tooth from external stimuli and eliminating the risk of post-op sensitivity—whether the tooth prep is moist or dry.



Why is **G-Cem™**
the superior
choice in
universal resin
luting cements?

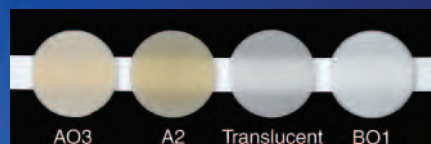
Compare G-Cem™, with its easy, one-step system and unique physical properties, to other popular resin cements. By almost any measure, G-Cem™ is clearly better.

Resin Cement Characteristics	G-Cem™	RelyX™ Unicem
• Truly universal—compatible with all materials (including CEREC®, the fastest-growing all-ceramic system)	✓	---
• Higher enamel bond strength*	✓	---
• Unique, self-activating capsule design—no need to use a capsule activator	✓	---
• 70% more material in each capsule (by ml)	✓	---
• Lower cost—15% less expensive per capsule	✓	---
Resin Cement Characteristics	G-Cem™	Maxcem™
• Significantly higher bond strength*	✓	---
• Capsule delivery ensures a fresh dosage every time, maintaining superior physical properties	✓	---
• Less waste, therefore lower costs	✓	---
Resin Cement Characteristics	G-Cem™	MultiLink®/ Panavia™
• One-step, self-adhesive system for ultimate ease of use	✓	---
• Multiple steps, more time required and more room for error	---	✓

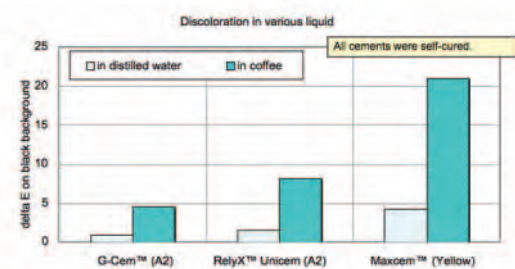
* Data on file
CEREC®, Cercon®, e.max®, Empress®, Maxcem™, MultiLink® Panavia™, Procera® and RelyX™ are not trademarks of GC America, Inc.



G-Cem's™ Product Shades



Discoloration



G-Cem™ offers no visible discoloration

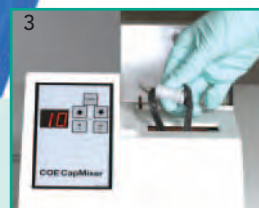
G-Cem's™ fast, easy application process



1 To activate, tap the capsule and push the plunger in.



2 Place capsule in a GC Applicator and click once.



3 Triturate for 10 seconds.



4 Place capsule on the GC Applicator and dispense into crown.



5 Seat crown and light cure.



6 Easily remove excess material.

G-Cem Refill Package – 50 capsules in one shade
 002584 - Shade A2
 002585 - Shade AO3
 002586 - Shade Translucent
 002587 - Shade BO1

G-Cem Assorted Refill Package – 50 capsules in assorted shades
 002588
 20 - Shade A2
 5 - Shade AO3
 20 - Shade Translucent
 5 - Shade BO1

G-Cem Trial Kit w/Applicator – 20 assorted capsules with GC Capsule Applicator
 439000
 10 - Shade A2
 5 - Shade Translucent
 1 - GC Capsule Applicator
 5 - Shade BO1
 1 - Instructions for use

G-Cem Trial Kit – 20 assorted capsules
 439002
 10 - Shade A2
 5 - Shade BO1
 5 - Shade Translucent
 1 - Instructions for use

G-Cem Starter Kit
 439003
 1 - Box 50 Capsules Assorted Refill Package (002588)
 1 - GC Capsule Applicator

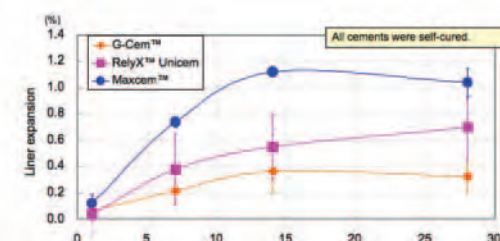
Testimonials

"G-Cem combines cutting-edge adhesive resin technology with the proven advantages of glass ionomer. It may well be the best combination of versatility and ease of use ever in a crown-and-bridge cement!"
 – Dr. Edmond R. Hewlett, Associate Professor and Vice-Chair (UCLA School of Dentistry, CA)

"G-Cem is an easy to use self-adhesive resin cement. The variety of G-Cem shades and its color stability allow for nice results with esthetic all-ceramic restorations."
 – Dr. Wynn Okuda, HI (Past President, AACD)

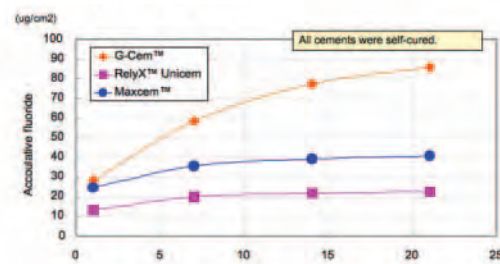
"G-Cem is as easy to use as conventional glass ionomer cement products with the added benefit of strong, self-etching resin technology. Clean up is as easy as flicking away excess with an explorer."
 – Dr. Robert Lowe, NC

Linear Expansion



The least dimensional change ensures G-Cem™ is most compatible with all-ceramic restorations

Fluoride Release



Highest Fluoride release of any self-adhesive resin cement



3737 West 127th Street Alsip, IL 60803
 1-800-323-7063
www.gcamerica.com or www.gcem.com



There's a
new G
 in town

Introducing
 G-Cem™:
 A new generation
 of self-adhesive
 resin cement

