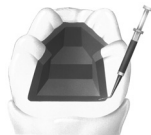


# ProLink™ UNIVERSAL DENTAL ADHESIVE

CE  
0473

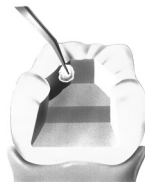
1.  
Etch enamel and/or  
dentin for 5 – 10 secs



2.  
Rinse with oil free water  
for 5-10 secs



3.  
Blot dry excess moisture  
from the surface and  
verify that the surface is  
completely moisture free.



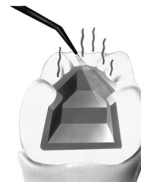
4.  
Dispense ProLink™  
directly onto a brush or  
micro brush by holding  
the brush tip directly over  
the nozzle of the tilted  
bottle.



5.  
Apply an ample amount of  
ProLink™, leave  
undisturbed for 15secs.



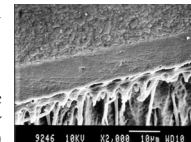
6.  
Remove solvents with a  
vigorous blast of air for  
at least 15secs or until  
no visible movement of the  
resin is noted. If the  
surface appears  
incompletely coated,  
apply additional material.



7.  
Cure ProLink™ with a  
visible light cure unit for  
20secs.



8.  
When the restoration  
retention area lies  
primarily within  
dentin, apply a  
second layer. Remove  
solvents immediately  
and light cure for 20  
seconds.



9.  
Restore with visible  
light cured or self  
cure composite resin  
of your choice or  
cement restoration  
with composite resin  
cement.

# ProLink™ UNIVERSAL DENTAL ADHESIVE

CE  
0473

ProLink™ is a single step bonding agent that delivers outstanding shear bonding values to dentin, enamel & all popular light, dual or auto-cure composites. ProLink™ utilizes advanced Colloidal Glass Technology to provide a first class dental adhesive.

## Indications

Direct Composite or compomer restorations  
Adhesive cementation  
Composite repair

## Essential Ingredients

Triethyleneglycol dimethacrylate  
Aliphatic polyester urethane acrylate  
Adhesive accelerator  
Hydroxyethyl methacrylate  
Glutaraldehyde  
Photoinitiators  
Acetone

## Instructions for Use (see illustrations)

### Tooth Preparation

Prepare the tooth according to clinical requirements

### Etching

1. Etch enamel and/or dentin for 5 – 10 secs
2. Rinse with oil free water for 5-10 secs
3. Blot dry excess moisture from the surface and verify that the surface is completely moisture free.

## Application of ProLink™

1. Dispense ProLink™ directly onto a brush or micro brush by holding the brush tip directly over the nozzle of the tilted bottle.
2. Apply an ample amount of ProLink™, leave undisturbed for 15secs. Remove solvents with a vigorous blast of air for at least 15secs or until no visible movement of the resin is noted. If the surface appears incompletely coated, apply additional material.
3. Cure ProLink™ with a visible light cure unit for 20secs.
4. When the restoration retention area lies primarily within dentin, apply a second layer. Remove solvents immediately and light cure for 20 seconds.
5. Restore with visible light cured or self cure composite resin of your choice or cement restoration with composite resin cement.

## Shelf Life

Shelf life: 2 years when stored at 20°C (68°F)

## Caution

For Dental Use Only

ProLink™ contains polymerizable monomers which may cause allergic contact dermatitis in susceptible persons.

Wash thoroughly with soap and water after contact. If skin sensitization occurs or if known allergy to methacrylate resin exists, discontinue use.

Using protective gloves is recommended.

In case of accidental contact with eyes or prolonged contact with oral tissues occurs, flush immediately with a large amount of water.

## Storage

ProLink™ is designed for use at room temperature (20-24°C) and should not be stored at elevated temperatures or under intense light.

The lot number & expiry date are indicated on the product.

Do not use after expiry date.

## Warranty

Silmet Ltd. will replace product that is proven to be defective. Silmet Ltd. does not accept liability for any damage or loss, direct or consequential, arising from the use of or inability to use the product described. It is the responsibility of the dentist to determine before use, the suitability of the product for its intended use. The dentist assumes all risk and liability in connection therewith.

## SILMET ■ BJM LAB

Silmet Ltd. 12 Hassadna St.  
Industrial Park Or-Yehuda 60200, Israel  
Tel: 972-3-5331474 Fax: 972-3-5331581  
e-mail: sales@silmet.co.il  
www.silmet.co.il

EC.Rep: Diadent, 13 Rue Jean Lolive  
2.1 La Fosse a la Barbriere,  
Aulnaye 93600, France