

ACCURATOR[®] A2

Apex Locator

NEW
GENERATION
MORE THAN
ACCURATE

25 National Patents 8 Invention Patents 12 Months Warranty

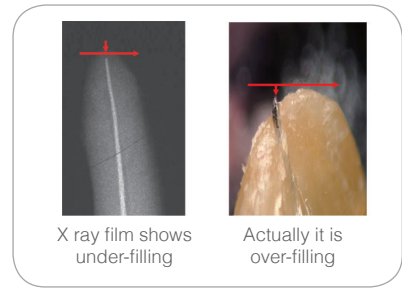
- Newly upgraded algorithm makes it more stable and enables stronger anti-interference ability.
- Multi-frequency apical position technology guarantees accurate measuring even there is blood or residual pulp in the root canal.
- Measurement results will not be affected by the tooth type.



The defect of traditional measurement method

Disadvantage of handing method

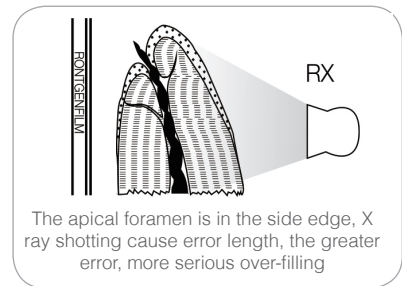
Based on hand feeling and patient's pain, dentists decide whether the measuring tool reaches apical foramen, with high subjectivity and low accuracy. Foreign literature suggest that providing the range of error +0.5 mm, accuracy of handing method is only 42%.



Disadvantage of X ray film

3D structure shooting at 2D plane, because of different angles, easily getting wrong data.

Apical foramen can't be shown in the X ray film, for over 80% apical foramens are in the side edge instead of apex.



Key Specifications

Power Consumption	≤ 0.5W
Battery	3.7V/750mAh
Screen	4.5" LCD
Net Weight	385g
Dimension	138mm x 77mm x 107mm
Warranty	12 Months

Order Information



Code: AL2080
Model: Accurator A2



Beyes Dental Canada Inc.
 23-595 Middlefield Road
 Toronto, Ontario, M1B 3M5
 Canada
Tel: 1-855-603-1888
Email: info@beyes.ca
Web: www.beyes.ca

Lotus NL B.V.
 Koningin Julianaplein 10, le Verd,
 2595AA, The Hague,
 Netherlands
Tel: +31645171879 (English)
 +31626669008 (Dutch)
Email: info@beyes.ca

Your Dealer for Beyes Products

Scan the QR code for more products



Printed in Canada
 File #: ENB033
 Rev.2/07.07.21

© Beyes Canada Inc 2021. All Rights Reserved.
 Specifications are subject to change without notice.
 All brands are holders of their respective trademarks.
 All Beyes products are manufactured in strict compliance with Health Canada regulations ensuring quality.
 Manufacturing facility is ISO 13485 certified under Canadian Medical Devices Conformity Assessment System (CMDCAS).