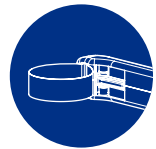


Available in 2 sizes to fit all size requirements

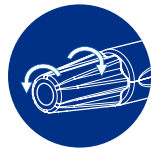
Item Code	Description	Units/Box
NEW CURVED BANDS 30030	Pro-Matrix Contoured Orange Wide 6mm	50
30040	Pro-Matrix Contoured Yellow Narrow 4.5mm	50
30010	Pro-Matrix Blue Wide 6mm	50
30020	Pro-Matrix Green Narrow 4.5mm	50



Available in 2 sizes



Sliding band deflector



Smooth tightening mechanism



Create anatomically contoured contacts with minimal burnishing for the tightest interproximal contacts

Endorsements

- "Easier to adjust than traditional metal matrix retainers."
- "No Set Up! It's so easy to use, no chance of setting up band incorrectly."
- "Easy, quick, great at conforming to tooth and easy to burnish. Fantastic improvement finally."
- "Ideal for pedo cases, cores and small restorations."
- "Ready to go and disposable."
- "Full circumferential band allows the Pro-Matrix to be used for all types of restorations, including large MODs and cusp replacement."
- "One-piece design with no additional tools required."
- "Useful even when adjacent tooth is missing."
- "Easy to remove band after use."

Features & Benefits of new curved bands

Pre-contoured matrix band facilitates the restoration of interproximal anatomical contours and contact areas of the tooth surface. Additionally, the pre-contoured matrix band creates a smooth external surface against which the restorative material may be conveniently packed reducing the risk of cupping.

Save Time, Simplify Procedures

Watch this video on how to use Pro-Matrix bands and discover how they will save you time.



Medicom® Trust in Quality

Like you, we never compromise. Our commitment is to help to make the world safer and healthier by offering consistent, reliable protection. We use carefully selected materials and engineer our products to offer protection you can count on.

As the maker of Safe brands, we take pride in the protection we offer, so you can take pride in yours.

Medicom® Pride in Protection.

www.medicom.com

AMD Medicom Inc.
T. (514) 636-6262 F. (514) 636-6266
E-Mail: cserviceemail@medicom.ca
Toll Free (North America) T. 1 (800) 361-2862 F. 1 (800) 616-4266

Rev. 00

Medicom®

Pro-Matrix™

Single-Use Matrix Band



DENTISTRY TODAY
TOP 100
PRODUCTS 2016
★★★★★



Pro-Matrix™ The new Class II

Engineered with a sophisticated design to meet the evolving needs of dentistry, Medicom's Pro-Matrix band will simplify procedures through easier placement and visibility.

FOR FREE SAMPLE
go to www.medicom.com

Clinical Problem Solutions

Clinical Problem:

When removing an old amalgam due to recurrent decay we will often discover significant damage to the underlying tooth. After removing all of the decayed portion of the tooth, there will not be much left for a matrix band to grab on to. Bleeding and fluid contamination are also challenges to overcome in placing a new restoration. A matrix that requires minimal adjustment is helpful.

Solution:

Pro-Matrix bands are able to grab and hold on to teeth with limited support. They even hold well on to teeth that have significant taper in their prep design. Pro-Matrix does a good job of creating an adequate seal at the cervical portion of the tooth, which helps keep the prep clean and dry for easy placement of any material that may be needed. The convenience of a disposable matrix and band which has been set up in advance makes Pro-Matrix an excellent choice for handling this challenging situation.



Feature & Benefits



What are the benefits of Pro-Matrix bands?

- Easy to use: Tapered neck design allows for easier placement, better visibility, and less obstruction
- 2 sizes: wide (6mm) and narrow (4.5mm)
- No risk of Sharps injuries when changing brands
- No sharp edges
- No chance of trapping the lip during tightening of the band
- Flexible enough to obtain a good contact point, even for composite restorations
- Available in two sizes: 6mm for use with molars, and 4mm for premolars and childrens teeth.

Especially Useful When Sectionals Can't Be Used

- Large gaps exist between teeth
- Adjacent tooth is missing
- Large and wide interproximal box
- Cusp replacement
- Large MOD cavities
- Amalgam restorations

Clinician's Comments

Nageen Rak, DDS:

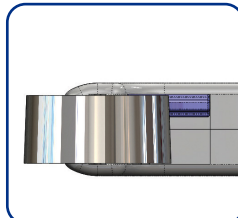
"These are very unique as they are "all in one" and very simple to use. They are lightweight, smooth, and do not pinch the patient's lips upon placement or when tightening them around the teeth. These bands slide through interproximal contacts very easily, even tight gingival embrasures."

Jeffrey Peifer, DMD:

"You just pop them out of the packs and tighten them down onto teeth. The bands are very easy to place and adapt, especially for build-ups on adults and maxillary posterior fills on kids. The cleanup is quick—just remove and throw away. I think it is a major improvement over tofflemire matrices. Less time messing with tofflemire means the procedure goes that much quicker."

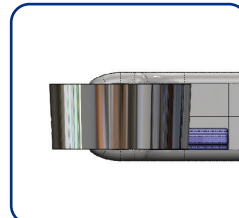
Preparing Pro-Matrix

Before use, adjust the toggle to suit the mouth quadrant in which the Pro-Matrix is being used.



Positioning Pro-Matrix

The toggle should be positioned closest to the gum-line to ensure the correct fit around the tooth.



Tightening Pro-Matrix

Fit the band around the tooth and tighten by turning the thumbscrew clockwise. Apply wedges and shape the band using a suitable burnishing tool if required.



Restore tooth

Perform restoration using normal clinical procedure.



Removal

To remove the band, first loosen it by turning the handle 2-3 turns anticlockwise.

