



SHINING 3D®

AORALSCAN INTRAORAL SCANNER



AORALSCAN

INTRAORAL SCANNING EXPERT

Aoralscan simplifies the intraoral scanning experience. The ease of operation provides patients comfort while delivering reliable scan results. Aoralscan enables dentists and technicians alike to easily obtain digital impressions.

POWDERLESS

No need for powder, guaranteeing a simplified scanning process and improving a patients' clinical experience.

REALISTIC COLOR

Real-time scan, realistic color, and a clear margin line.

EASY OPERATION

Get started with ease through a user-friendly interface. Allow sterile scanning by a single technician or dentist using the motion sensing function.

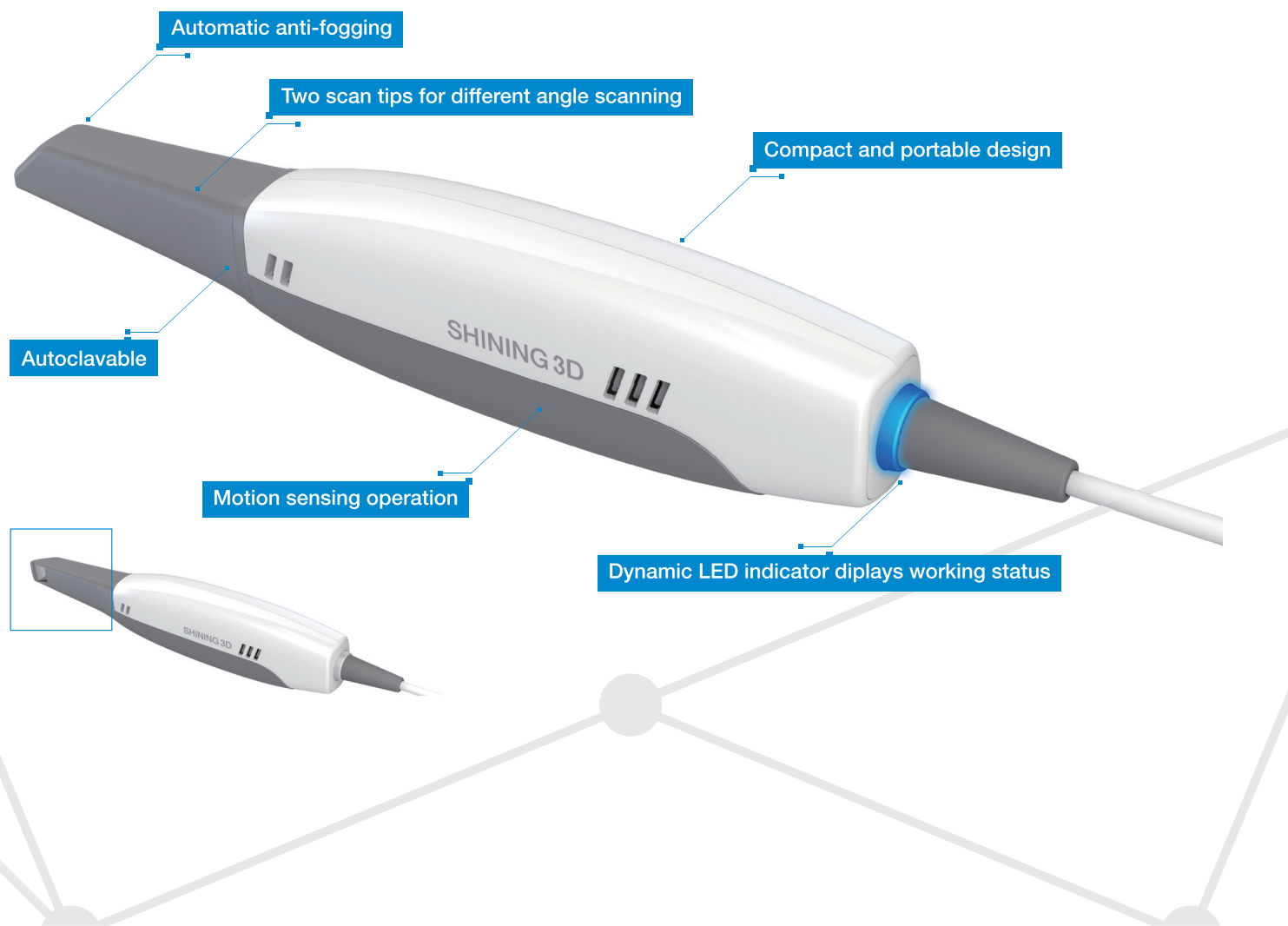
INTELLIGENT SCAN

Self-developed scanning software integrates rich data processing functions to obtain high-quality digital impressions.

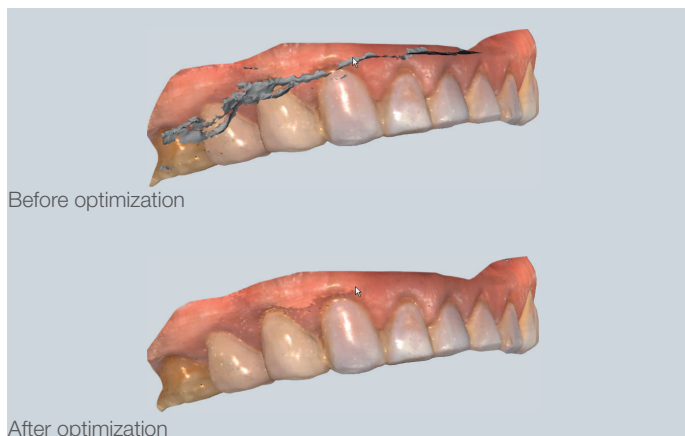


AORALSCAN

Adopting the technology of structured light, Aoralscan can obtain full-color 3D data of teeth and gums directly.



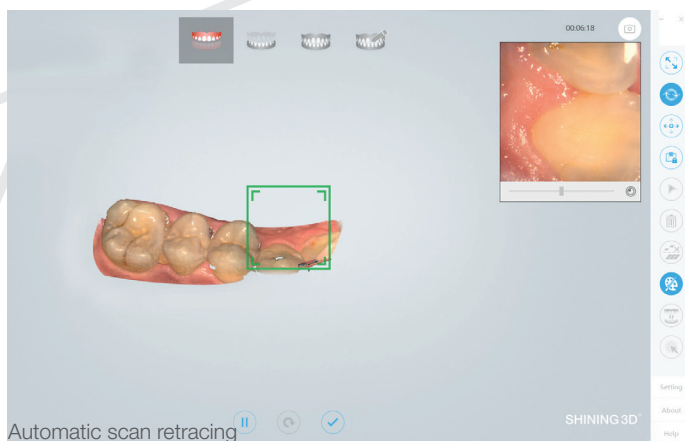
INTELLIGENT INTRAORAL SCANNING EXPERIENCE



SHINING 3D's self-developed 3D scanning system, integrating rich data processing function and intelligent data optimization, guarantees the users easy access to high-quality digital impressions.

INTELLIGENT DATA OPTIMIZATION

Through the use of AI, the software can automatically identify and delete miscellaneous data such as the buccal/lingual side to realize automated data optimization.



AUTOMATIC SCAN RETRACING

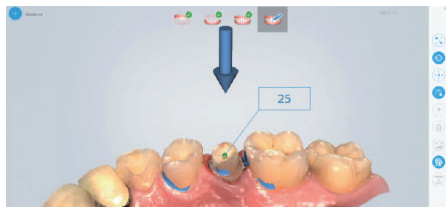
When some part of the scan is missing during scanning, this retracing function allows users to jump back to missing area for rescan; aligning the data smoothly.

INTELLIGENT INTRAORAL SCANNING EXPERIENCE

CLINICAL TOOLKIT

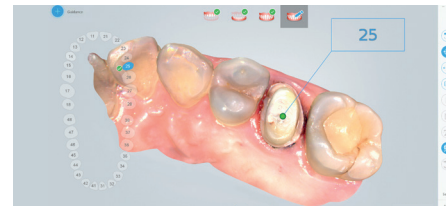
The clinical toolkit can help users to evaluate the scanned data at clinics. This includes functions as "adjust coordinate", "extract margin line", "check bite", "mark teeth", "check undercut", etc. This facilitates effective communication between clinics and dental labs while saving time, ensuring high efficiency and quality for design and restoration projects.

Check undercut



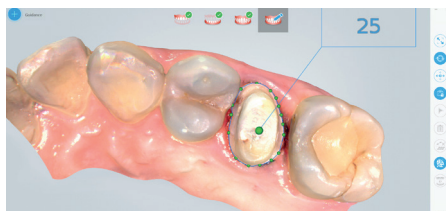
Check bite

Adjust
coordinate



Mark teeth

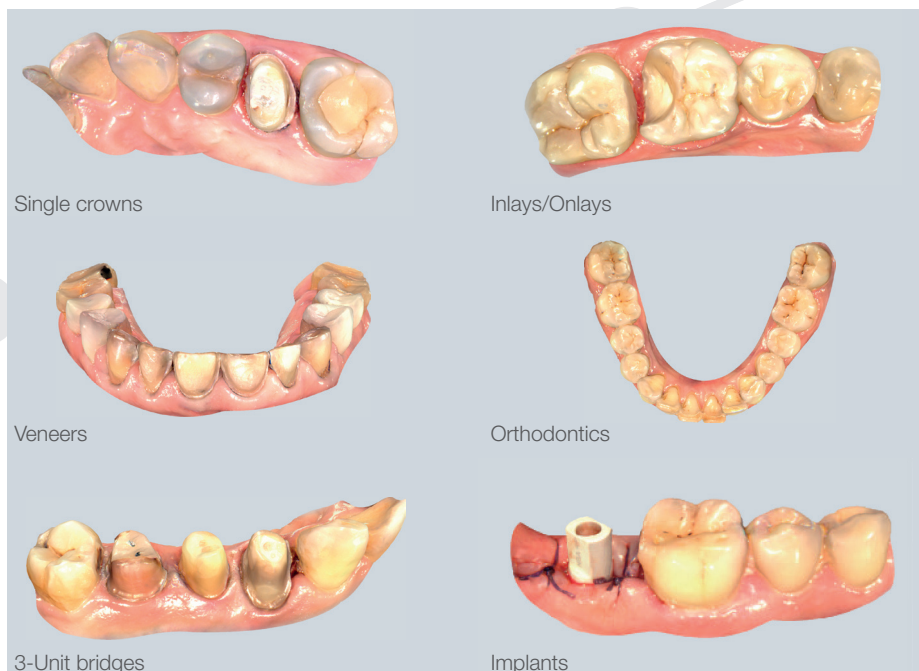
Extract margin
line



Import to exocad

UNIVERSAL APPLICATION

The Aoralscan intraoral scanner can be applied for indications of implant, restoration, and orthodontics. Whether in instant chairside treatments or "clinic+dental lab" integration, the Aoralscan always provides a smooth user experience.



INDICATIONS

Meet requirements for a variety of indications, including single crowns, inlays/onlays, bridges, veneers, orthodontics, and implants.

DATA CLOUD PLATFORM

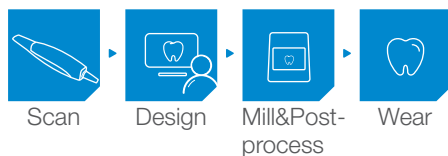
SHINING 3D's cloud data platform enables data transmission, making it convenient for order tracking and facilitating communication between clinics and dental labs.

FLEXIBLE WORKFLOW

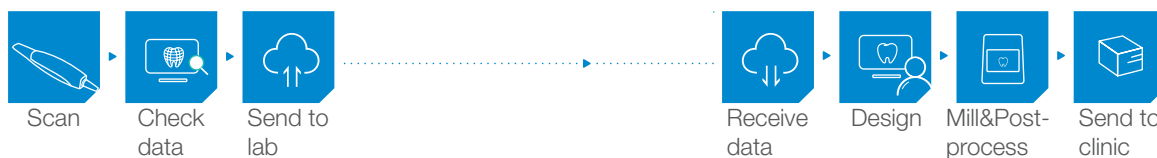
CLINIC

DENTAL LAB

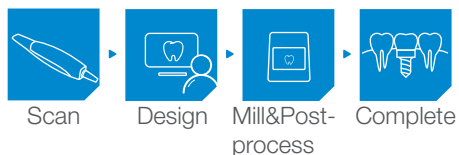
CHAIRSIDE INSTANT RESTORATION



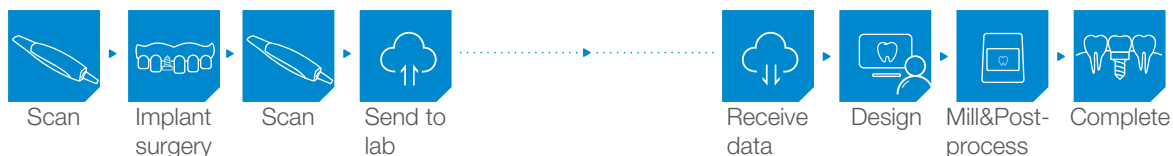
CLINIC + DENTAL LAB RESTORATION



CHAIRSIDE IMPLANT INSTANT TREATMENT



CLINIC + DENTAL LAB IMPLANT TREATMENT



ORTHODONTICS



TECHNICAL SPECIFICATIONS

MODEL AORALSCAN

Scanning Speed	15 fps (video-based)
Temperature	10°C - 40°C (Accuracy can be influenced by too high or too low temperature)
Output Data	STL, OBJ
Interface	USB 3.0
Power	DC12V 1.67A

RECOMMENDED PC CONFIGURATION

Processor	i7-7700 or higher
RAM	16GB or more
Graphic Card	NVIDIA® GeForce® GTX 1060 6GB DDR or higher
Operation system	Windows 10 64bit