

Everyday Relief. Everyday Protection.



Treats Sensitivity • Soothes & Moisturizes Dry Mouth Tissues

Enamelon® Preventive Treatment Gel

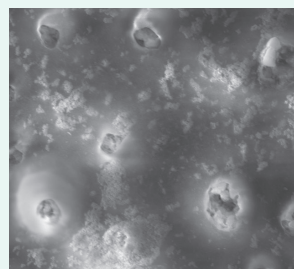
- Treats sensitivity
- Relieves the discomfort of dry mouth tissues*
- Helps to prevent caries & gingivitis
- Non-irritating to patients with dry mouth*
- Contains no SLS, gluten or dyes
- 0.40% stabilized stannous fluoride (970 ppm F)
- Optimized with calcium and phosphate ions
- Non-abrasive formula for daily use
- Non-prescription, safe for patients of all ages**

**Dose based on age



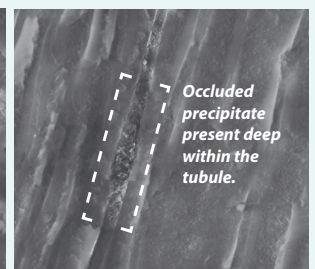
Dentin Surface Post-Treatment

Scanning Electron Micrograph (SEM) of dentinal tubules after 5 day application with Enamelon.



Longitudinal View of Treated Dentin

SEM Image of the newly occluded dentinal tubules after day 5 (10 applications) with Enamelon.



Tubules are almost completely filled in with a precipitate of Amorphous Calcium Phosphate Fluoride.

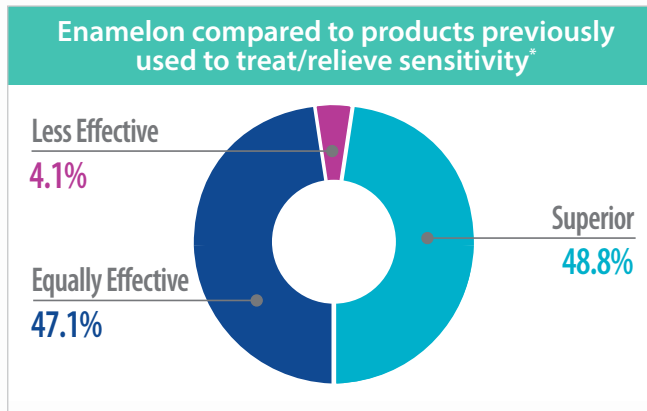
Ordering Information

9007285 Enamelon® Preventive Treatment Gel
4.0 oz (113 g), Clean Mint, 12/case

Treats sensitivity

Occludes tubules with ACP & Fluoride

Enamelon® contains stannous fluoride along with calcium and phosphate ions that have proven effective for tubule occlusion. By blocking the exposed tubules with a combination of stannous (tin) ions along with fluoride, calcium and phosphate salts, a physical barrier is created that covers open dentinal tubules to prevent external stimuli from causing pain or discomfort.

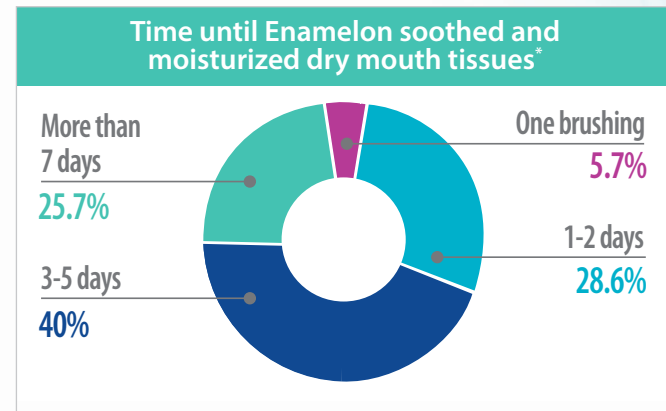


Soothes dry mouth tissue

Enamelon provides an immediate and long lasting soothing, moisturizing and lubricating effect.

Through the use of proprietary co-polymers, Ultramulsion® benefits your patients by providing a long-lasting coating that lubricates and soothes the soft tissues of the mouth.

The only over-the-counter (OTC) stannous fluoride preventive treatment gel that has been shown in a clinical trial to help reduce many sensory symptoms of dry mouth.†

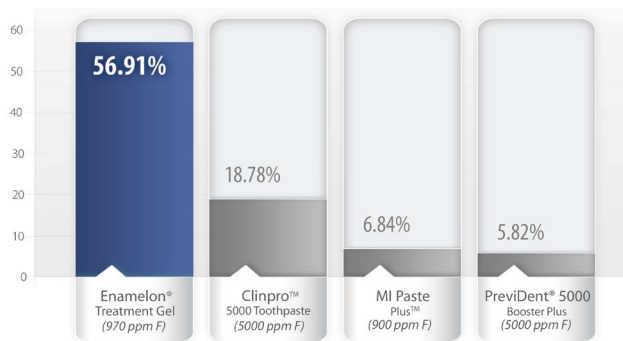


More protection, less fluoride!

3x greater reduction of enamel solubility

Enamel Solubility Reduction FDA Method #33¹

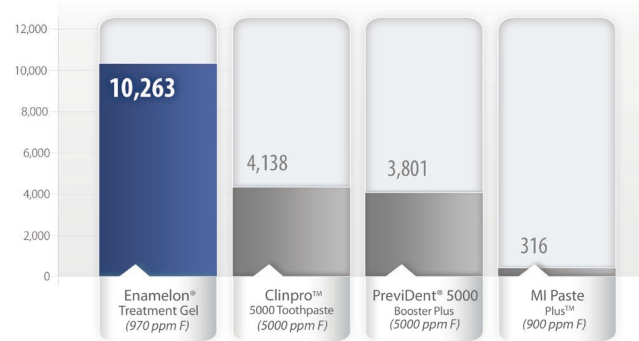
Negative Control (Water) recorded a -5.45% Enamel Solubility Reduction



In-vitro testing shows that Enamelon® reduces the solubility of enamel, preventing demineralization of the tooth surface when exposed to acids, providing 3x greater protection against acid challenges.

More protection with less fluoride

Enamel Fluoride Uptake (ppm F) FDA Method #40²



Enamelon® provides over 2x more beneficial fluoride with only one-fifth the amount contained in 5000 ppm fluoride toothpastes.



Premier® Dental Products Company • 1710 Romano Drive, Plymouth Meeting, PA 19462, USA

Phone 888-670-6100 • 610-239-6000 • Fax 610-239-6171 • www.premusa.com • E-mail: dentalinfo@premusa.com

1 Schemehorn BR, DiMarino JC, Movahed N. Comparison of the Enamel Solubility Reduction from Various Prescription and OTC Fluoride Toothpastes and Gels. Journal of Clinical Dentistry, 2014; 25:61-64. / 2 Schemehorn BR, DiMarino JC, Movahed N. Comparison of the incipient lesion enamel fluoride uptake from various prescription and OTC fluoride toothpastes and gels. J Clin Dent. 2014;25:57-60. / Enamelon® United States Patent Numbers: US 5,993,784, US 5,711,936, US 5,651,959 and other patents pending. Made in U.S.A. / Ultramulsion® is a registered trademark of WhiteHill Oral Technologies, Inc. / Clinpro™, MI Paste Plus™ and PreviDent® are not trademarks of Premier® Dental Products Company. / *Data on file. / † Milleman J.L., Milleman K.R., Santos S.L., Proskin H.M., Battershell K.K., DiMarino J.C.A. Subjective assessment of Enamelon® Preventive Treatment Gel in A Self-reported Dry-Mouth Population. Compend Contin Educ Dent. 2016;37(8):E6-E10.