



Pro-Matrix™

By Shannon Pace Brinker, CDA, CDD, ACE

Restoring Class II adhesive and/or amalgam restorations requires clinicians to achieve tight proximal contacts, good contours, and proper anatomy. Matrix bands have been of paramount importance to these efforts, and there are currently numerous varieties available on the market today.

Matrix bands are essentially a metal or plastic band secured around the crown of a tooth to confine the restorative materials that will be adapted into a prepared cavity. Their primary function is to enable clinicians to more easily restore anatomic proximal contours and contact areas. Therefore, it is imperative that matrix bands be sufficiently rigid against existing tooth structure, prevent gingival overhang, establish proper anatomic contours, facilitate restoration of the correct proximal contact relationship, and be easy to remove. In many instances, successfully establishing well-contoured restorations may require the use of a wedge.

Additionally, because matrix bands often infringe upon the gingival tissues and/or enter the gingival margins during placement, it is advisable to use matrices that limit trauma to the hard and soft tissues and are biocompatible. Considering the frequency with which matrices are exposed to saliva and blood contamination and potential pathogens, they should also be sterilizable. Unfortunately, the complex surface morphology of most matrix bands makes routine instrument cleaning prior to sterilization difficult and unreliable.

What's more, published research has indicated that dental professionals rely on routine instrument cleaning and sterilization processes for disinfection prior to re-use, which is adequate if the procedures are thorough. Ultrasonic cleaners are used by the majority of dental practices, although scrubbing by hand remains an aspect of instrument cleaning.

Fortunately, fully disposable alternatives to the more traditional matrix bands are available. Although dental practitioners must decide for themselves which system works best for them, disposable matrix bands represent a safe and effective means to establish ideal interproximal contacts and contours while simultaneously promoting superior infection control protocol. Contemporary Product Solutions recently reviewed the Pro-Matrix™ Single-use Matrix Bands from Medicom, which represent the next generation matrix band designed to meet the evolving needs of today's dental professionals when placing both amalgam and composite restorations.



Contemporary Product Solutions, with its leaders in dental assisting, reviewed this product and gave it a *4-diamond rating.*

Pro-Matrix™ Single-use Matrix

Bands are available in two sizes—wide is 6 mm, narrow is 4.5 mm. The sophisticatedly designed 0.038-mm thick matrix band simplifies procedures by enabling easier placement and improved visibility, which helps save valuable preparation time. Pre-assembled, it features a sliding band deflector and smooth tightening mechanism, making the circumferential band suitable for large and small restorations. When required, a wedge may be used for composite fillings to slightly separate the teeth; when the wedge is removed, the teeth close back to contact.



The Pro-Matrix™ matrix band, which is made from recyclable materials, is intended for single use, which protects against cross-contamination. The Pro-Matrix™ matrix band should be disposed of in an appropriate sharps container like any matrix band.

50 per Box

Narrow 4.5mm (246-0179)

Wide 6mm (246-0178)

Image 1: Before using the Pro-Matrix™, adjust the Pro-Matrix™ to the quadrant being prepared. Fit the Pro-Matrix™ Band around the tooth and tighten the matrix by turning the end clockwise.

Image 2: Apply wedges and shape the band by using a burnisher if needed.

Image 3: Multiple matrix bands can be used for more than one prep.

Image 4: Lingual View of Pro-Matrix™.

Image 5: Placement of narrow Pro-Matrix™ Band by Pro-Matrix™.

When removing the Pro-Matrix™, remove the wedge and loosen the handle by turning it counter-clockwise 2-3 turns. The band can then be removed for easy adjusting and polishing of the restoration.

Evaluation Results

The Academy of Chairside Assisting recently conducted an evaluation soliciting the opinions of 10 dental assistants for over 49 uses. Various practices around the United States and Canada recently reviewed the Pro-Matrix™ Single-use Matrix Bands from Medicom, which represent the next generation matrix band to meet the evolving needs of today's dental professionals. 89% said when placing both amalgam and composite restorations the matrix band was the easiest they had ever used. 84% said the Pro-Matrix™ Single-use Matrix Bands being available in two sizes (wide is 6 mm; narrow is 4.5 mm) made it so much easier to make a selection based on the preparation compared to other matrix systems. 70% reported the sophisticatedly designed 0.038-mm thick matrix band simplifies procedures by enabling easier placement and improved visibility that ultimately save valuable preparation time. 99% said the pre-assembled band, featuring a sliding band deflector and smooth tightening mechanism, makes the circumferential band suitable for large and small restorations. Almost all commented they used a wedge during the procedure. 100% said they appreciated the Pro-Matrix™ matrix band being made from recyclable materials. 88% said they would continue to use this product after the evaluation. Pro-Matrix™ received 4-Diamond Rating from the Academy of Chairside Assisting Evaluators.



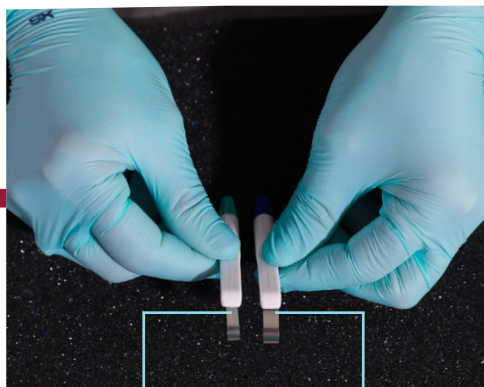
"Running a Dental Assistant school, we have always taught with conventional matrix bands. When I was asked to evaluate the Pro-Matrix™ bands, the students were so excited. Disposable and all-in-one makes placement so much easier!"

Susie Tschetter, DA



"I loved using these matrix bands, and the fact that there are two sizes makes things easier. After using the Pro-Matrix™ Bands, I can't use anything else! I am in LOVE!"

Geri Holmes, DA



Narrow: 4.5mm

Wide: 6mm



1



2



3



4



5

