



SHINING 3D®

# AutoScan-DS-EX

Go Digital Beyond Limitations



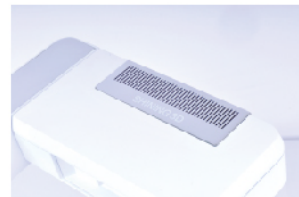
The AutoScan-DS-EX is specifically developed for the dental market. It adopts the latest structured light scanning technology to provide accurate and efficient solutions for those who focus on productivity and cost-effectiveness.

The AutoScan-DS-EX 3D scanner provides an optimal data post-processing option through LAN network, and a revolutionary structure that allows easy upgrades for the foreseeable future. It is your ideal digital lab companion.

AutoScan-DS-EX scanner can be applied to different levels of dental laboratories, dental vocational colleges, dental clinics, etc. Its intuitive design and automatic work-flow brings incredible benefits to dental labs and vocational education centers of dental technology.

## Modular Structure

The AutoScan-DS-EX scanner consists of detachable modules, which make possible future functional upgrades, for when customers require higher performance and functionalities.



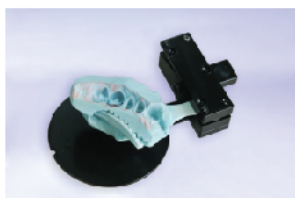
## Multiple Functions Available

**Articulator scanning:** support the scanning of most articulators available in the market, such as Artex, KAVO, SAM, etc.



**Triple-tray scanning:** more convenient triple-tray impression scanning with optimized jig.

**Texture scanning:** marks on dental models can be captured clearly, providing reference for further design work.



## Continuous Scanning Mode Available

By using a LAN network connection, scanning and data processing can be now carried out on separate computers. This new function will dramatically take the work efficiency to another level.

## Fully Open Structure, Unimaginable Compact Size

- Unprecedented open structure, easier for cleaning and model set up.
- Unmatched small size with an ideal footprint for office use.
- Overall weight of 5 kg, portable for ease of transportation.
- Innovative quick release jig, convenient for model set up.
- This new design will further improve the work efficiency and convenience.

## Clinic Mode Added

With the clinic mode, desktop 3D scanner can be applied to dental clinics directly to support chair-side restoration solutions.

## Open Data Format

Export STL data, high compatibility with current open CAD/CAM software and hardware in the market.

## Specification

| Model              | AutoScan-DS-EX  |
|--------------------|---|
| Camera resolution  | 1,300,000   |
| Accuracy           | < 15 μm   |
| Scanning Range     | 100 mm * 100 mm * 75 mm   |
| Scanning Time      | bite: 18 s    upper / lower jaw: 42 s    1-8 dies: 42 s    impression: 90 s |
| Scanning Principle | structured light 3D scanning  |
| Temperature        | 10 °C to 30 °C (higher temperature will affect the scanning result)         |
| Dimension          | 260 mm * 270 mm * 420 mm  |
| Weight             | 5 kg  |
| Output Format      | STL, OBJ  |
| Interface          | USB 3.0   |
| Power              | AC 24 V   |