

**NEW
DESIGNS**

Larger Handle for more comfort & control!



137 Anterior 9061421 - 2 pack / 9061420 - 5 pack



204 Posterior 9061423 - 2 pack / 9061422 - 5 pack



Facial (Goldman-fox) 9061402 - 2 pack / 9061403 - 5 pack



Universal (4L/4R) 9061401 - 2 pack / 9061400 - 5 pack

Premier® Implant Scalers

Engineered for reliable implant maintenance

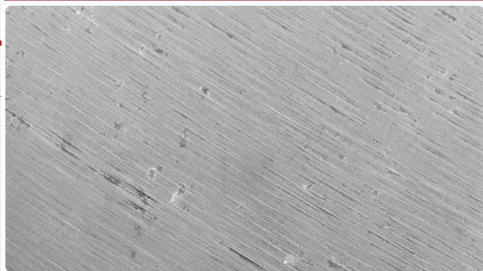
Made In The U.S.A.

Premier® Implant Scalers are made from fiber reinforced graphite that will not scratch implant surfaces. The tips are thin and sharp with well-defined edges. The graphite is strong yet slightly flexible, allowing the tips to access tight areas effectively and safely. The redesigned handle has textured grips and a larger diameter for greater comfort and control. Premier Implant Scalers can be reused and are autoclavable (273°F / 134°C).



Premier® Implant Scalers

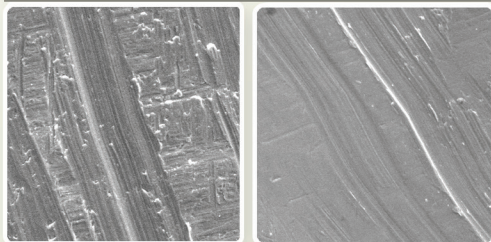
Implant surface after being scaled with Premier® Implant Scaler



The smooth abutment surface resists attachment of plaque and bacteria
Premier Implant Scaler (100um)

- **Fiber reinforced graphite** – Will not scratch implant structures
- **Precisely engineered tips** – Thin and sharp with well defined edges, effective in removing plaque and calculus
- **Variety of styles** – For every use and preference
- **Redesigned handle, larger diameter and textured grips** - Greater comfort and control
- **Reusable** - Autoclavable (273°F / 134°C)
Premier Implant Scalers should not be resharpended.

Implant surface after being scaled with stainless steel and titanium scaler



Rough abutment surface can harbor plaque and bacteria

Stainless Steel Scaler
(100um)

Titanium Scaler
(100um)

Most titanium scalers tips are made from grade five titanium. Implant structures are made from titanium grades one through five, depending on the brand. The lower the titanium grade the softer the metal. Scaling with harder grade five titanium tips creates a substantial risk that some implant structures will be scratched.

Premier® Implant Cement™

Ideal for both implant retained crowns and long-term temporaries

Premier Implant Cement, a non-eugenol, resin-based cement, offers both secure cementation and, when needed, retrievability.

- **Retention** – Secure cementation
 - **Retrievability** – Off when you need it
 - **Low solubility** – Good marginal seal
 - **Easy to use** – No adhesives or primers
 - **No fluoride** – Safe for all alloy's including titanium
- Implant Cement** (3001450)
1 - 5ml Automix syringe, 10 Mix Tips and 1 Mixing Pad
- Mixing Tips** (3001451)
25 - Automix Syringe Mix Tips
- Value Pack** (3001455)
3 - 5ml Automix Syringes, 25 Mix Tips

Order Through Your Authorized Dealer.

Secure Retention
when you want it

Retrievability
when you need it



MDSS GmbH
Schiffgraben 41
30175 Hannover, Germany

