

HIGHLIGHTS OF PRESCRIBING INFORMATION

These highlights do not include all the information needed to use Septocaine® safely and effectively. See full prescribing information for Septocaine®.

Septocaine® (articaine HCl and epinephrine) Injection; Intraoral Submucosal Injection (Articaine Hydrochloride and Epinephrine Injection, USP)
Articaine hydrochloride 4% and epinephrine 1:200,000
Articaine hydrochloride 4% and epinephrine 1:100,000

Initial U.S. Approval: 2000

INDICATIONS AND USAGE

Septocaine®, an amide local anesthetic containing a vasoconstrictor, is indicated for local, infiltrative, or conductive anesthesia in both simple and complex dental procedures.

DOSAGE AND ADMINISTRATION

For dental injection by submucosal infiltration or nerve block. (2.1)
• For infiltration: 0.5-2.5 mL (20-100 mg articaine HCl) (2.1)
• For nerve block: 0.5-3.4 mL (20-136 mg articaine HCl) (2.1)
• For oral surgery: 1.0-5.1 mL (40-204 mg articaine HCl) (2.1)
• For most routine dental procedures, Septocaine® containing epinephrine 1:200,000 is preferred. However, when more pronounced hemostasis or improved visualization of the surgical field are required, Septocaine® containing epinephrine 1:100,000 may be used. (2.1)
• Dosages should be reduced in pediatric patients, elderly patients, and patients with cardiac or liver disease. (2.1)
Maximum recommended dosages (2.2):
• Adults: 7 mg/kg (0.175 mL/kg)
• Children 4-16 years: 7 mg/kg (0.175 mL/kg), depending on the age, weight and magnitude of the operation.

DOSAGE FORMS AND STRENGTHS

Injection (clear colorless solution), containing:
• Articaine hydrochloride 4% (40 mg/mL) and epinephrine 1:200,000 (as epinephrine bitartrate 0.009 mg/mL) (3)
• Articaine hydrochloride 4% (40 mg/mL) and epinephrine 1:100,000 (as epinephrine bitartrate 0.018 mg/mL) (3)

FULL PRESCRIBING INFORMATION: CONTENTS*

1	INDICATIONS AND USAGE
2	DOSAGE AND ADMINISTRATION
2.1	General Dosing Information
2.2	Maximum Recommended Dosages
2.3	Dosing in Special Populations
3	DOSAGE FORMS AND STRENGTHS
4	CONTRAINDICATIONS
5	WARNINGS AND PRECAUTIONS
5.1	Accidental Intravascular Injection
5.2	Systemic Toxicity
5.3	Vasoconstrictor Toxicity
5.4	Methemoglobinemia
5.5	Anaphylaxis and Allergic-Type Reactions
6	ADVERSE REACTIONS
6.1	Clinical Studies Experience
6.2	Postmarketing Experience
7	DRUG INTERACTIONS

CONTRAINDICATIONS

Known hypersensitivity to sulfite. (4)

WARNINGS AND PRECAUTIONS

- Accidental Intravascular Injection: May be associated with convulsions followed by coma and respiratory arrest. Resuscitative equipment, oxygen and other resuscitative drugs should be available. (5.1)
- Systemic Toxicity (5.2)
- Vasoconstrictor Toxicity: Local anesthetic solutions like Septocaine® that contain a vasoconstrictor should be used cautiously, especially in patients with impaired cardiovascular function or vascular disease. (5.3)
- Methemoglobinemia (5.4)
- Anaphylaxis and Allergic-Type Reactions (5.5)

ADVERSE REACTIONS

The most common adverse reactions (incidence >2%) are headache and pain. (6.1)
To report SUSPECTED ADVERSE REACTIONS, contact Septodont at 1-800-872-8305 or FDA at 1-800-FDA-1088 or www.fda.gov/medwatch.

DRUG INTERACTIONS

- Monoamine oxidase inhibitors, nonselective beta adrenergic antagonists, or tricyclic antidepressants may produce severe, prolonged hypertension (7)
- Phenothiazines and butyrophenones may reduce or reverse the pressor effect of epinephrine (7)

USE IN SPECIFIC POPULATIONS

- Pregnancy: Based on animal studies, may cause fetal harm. (8.1)
- Nursing Mothers: Exercise caution when administering to a nursing woman. (8.3)
- Pediatric Use: Safety and effectiveness in pediatric patients below the age of 4 years have not been established. (8.4)

See 17 for PATIENT COUNSELING INFORMATION.

Revised: 1/2010

FULL PRESCRIBING INFORMATION

1 INDICATIONS AND USAGE

Septocaine®, an amide local anesthetic containing a vasoconstrictor, is indicated for local, infiltrative, or conductive anesthesia in both simple and complex dental procedures.

2 DOSAGE AND ADMINISTRATION

2.1 General Dosing Information

Table 1 (below) summarizes the recommended volumes and concentrations of Septocaine® for various types of anesthetic procedures. The dosages suggested in this table are for normal healthy adults, administered by submucosal infiltration or nerve block.

Table 1: Recommended Dosages for Both Strengths

Procedure	Septocaine® Injection	
	Volume (mL)	Total dose of articaine HCl (mg)
Infiltration	0.5 – 2.5	20 – 100
Nerve block	0.5 – 3.4	20 – 136
Oral surgery	1.0 – 5.1	40 – 204

The recommended doses serve only as a guide to the amount of anesthetic required for most routine procedures. The actual volumes to be used depend on a number of factors such as type and extent of surgical procedure, depth of anesthesia, degree of muscular relaxation, and condition of the patient. In all cases, the smallest dose that will produce the desired result should be given.

The onset of anesthesia and the duration of anesthesia are proportional to the volume and concentration (i.e., total dose) of local anesthetic used. Caution should be exercised when employing large volumes because the incidence of side effects may be dose-related.

For most routine dental procedures, Septocaine® containing epinephrine 1:200,000 is preferred. However, when more pronounced hemostasis or improved visualization of the surgical field are required, Septocaine® containing epinephrine 1:100,000 may be used.

2.2 Maximum Recommended Dosages

- Adults: For normal healthy adults, the maximum dose of articaine HCl administered by submucosal infiltration or nerve block should not exceed 7 mg/kg (0.175 mL/kg).
- Pediatric Patients Ages 4 to 16 Years: The quantity of articaine HCl in children ages 4 to 16 years of age to be injected should be determined by the age and weight of the child and the magnitude of the operation. The maximum dose of articaine HCl 4% should not exceed 7 mg/kg (0.175 mL/kg) [see *Use in Specific Populations* (8.4)].
- Safety and effectiveness of Septocaine® in pediatric patients below the age of 4 years have not been established.

2.3 Dosing in Special Populations

Dose reduction may be required in debilitated patients, acutely ill patients, elderly patients, and pediatric patients commensurate with their age and physical condition. No studies have been performed in patients with renal or liver dysfunction. Caution should be used in patients with severe liver disease. [see *Warnings and Precautions* (5.2), *Use in Specific Populations* (8.4, 8.5, and 8.6)]

3 DOSAGE FORMS AND STRENGTHS

Injection (clear colorless solution), containing:

- Articaine hydrochloride 4% (40 mg/mL) and epinephrine 1:200,000 (as epinephrine bitartrate 0.009 mg/mL)
- Articaine hydrochloride 4% (40 mg/mL) and epinephrine 1:100,000 (as epinephrine bitartrate 0.018 mg/mL)

4 CONTRAINDICATIONS

Septocaine is contraindicated in patients who are hypersensitive to products containing sulfites. Products containing sulfites may cause allergic-type reactions including anaphylactic symptoms and life-threatening or less severe asthmatic episodes in certain susceptible people. Sulfite sensitivity is seen more frequently in asthmatic than in non-asthmatic people [see *Warnings and Precautions* (5.5)].

5 WARNINGS AND PRECAUTIONS

5.1 Accidental Intravascular Injection

Accidental intravascular injection of Septocaine® may be associated with convulsions, followed by central nervous system or cardiorespiratory depression and coma, progressing ultimately to respiratory arrest. Dental practitioners who employ local anesthetic agents including Septocaine® should be well versed in diagnosis and management of emergencies that may arise from their use. Resuscitative equipment, oxygen, and other resuscitative drugs should be available for immediate use. To avoid intravascular injection, aspiration should be performed before Septocaine® is injected. The needle must be repositioned until no return of blood can be elicited by aspiration. Note, however, that the absence of blood in the syringe does not guarantee that intravascular injection has been avoided.

Small doses of local anesthetics injected in dental blocks may produce adverse reactions similar to systemic toxicity seen with unintentional intravascular injections of larger doses.

Confusion, convulsions, respiratory depression or respiratory arrest, and cardiovascular stimulation or depression have been reported. These reactions may be due to intra-arterial injection of the local anesthetic with retrograde flow to the cerebral circulation. Patients receiving these blocks should be observed constantly. Resuscitative equipment and personnel for treating adverse reactions should be immediately available. Dosage recommendations should not be exceeded [see *Dosage and Administration* (2.1)].

5.2 Systemic Toxicity

This includes toxicity arising from accidental intravascular injection of Septocaine® discussed in Section 5.1, as well as that related to higher systemic concentrations of local anesthetics or epinephrine [see *Warnings and Precautions* (5.3)]. Systemic absorption of local anesthetics including Septocaine® can produce effects on the central nervous and cardiovascular systems.

At blood concentrations achieved with therapeutic doses of Septocaine®, changes in cardiac conduction, excitability, refractoriness, contractility, and peripheral vascular resistance are minimal. However, toxic blood concentrations of Septocaine® can depress cardiac conduction and excitability, which may lead to atrioventricular block, ventricular arrhythmias, and cardiac arrest, possibly resulting in fatalities. In addition, myocardial contractility is depressed and peripheral vasodilatation occurs, leading to decreased cardiac output and arterial blood pressure. Septocaine® should also be used with caution in patients with heart block as well as those with impaired cardiovascular function since they may be less able to compensate for functional changes associated with the prolongation of A-V conduction produced by these drugs.

Restlessness, anxiety, tinnitus, dizziness, blurred vision, tremors, depression, or drowsiness may be early warning signs of central nervous system toxicity.

Careful and constant monitoring of cardiovascular and respiratory (adequacy of ventilation) vital signs and the patient's state of consciousness should be performed after each local anesthetic injection of Septocaine®. Repeated doses of Septocaine® may cause significant increases in blood levels because of possible accumulation of the drug or its metabolites. The lowest dosage that results in effective anesthesia should be used to decrease the risk of high plasma levels and serious adverse effects. Tolerance to elevated blood levels varies with the status of the patient. Resuscitative equipment, oxygen, and other resuscitative drugs should be available for immediate use. Precautions for epinephrine administration, discussed in Section 5.3, should be observed.

Debilitated patients, elderly patients, acutely ill patients, and pediatric patients should be given reduced doses commensurate with their age and physical condition [see *Dosage and Administration* (2.1, 2.3)]. No studies have been performed in patients with liver dysfunction, and caution should be used in patients with severe hepatic disease.

5.3 Vasoconstrictor Toxicity

Septocaine® contains epinephrine, a vasoconstrictor that can cause local or systemic toxicity and should be used cautiously. Local toxicity may include ischemic injury or necrosis, which may be related to vascular spasm. Septocaine® should be used with caution in patients during and following the administration of potent general anesthetic agents, since cardiac arrhythmias may occur under such conditions. Patients with peripheral vascular disease and those with hypertensive vascular disease may exhibit exaggerated vasoconstrictor response.

The American Heart Association has made the following recommendation regarding the use of local anesthetics with vasoconstrictors in patients with ischemic heart disease:

“Vasoconstrictor agents should be used in local anesthesia solutions during dental practice only when it is clear that the procedure will be shortened or the analgesia rendered more profound. When a vasoconstrictor is indicated, extreme care should be taken to avoid intravascular injection. The minimum possible amount of vasoconstrictor should be used.” (Kaplan, 1986).

It is essential to aspirate before any injection to avoid administration of the drug into the blood stream.

5.4 Methemoglobinemia

Articaine, like other local anesthetics, can cause methemoglobinemia, particularly in conjunction with methemoglobin-inducing agents. Septocaine® should not be used in patients with congenital or idiopathic methemoglobinemia, or in patients who are receiving treatment with methemoglobin-inducing agents since they are more susceptible to drug-induced methemoglobinemia.

Signs and symptoms of methemoglobinemia may be delayed some hours after exposure. Initial signs and symptoms of methemoglobinemia include slate grey cyanosis seen in buccal mucous membranes, lips, and nail beds. In severe cases, symptoms may include central cyanosis, headache, lethargy, dizziness, fatigue, syncope, dyspnea, CNS depression, seizures, dysrhythmia, and shock. Methemoglobinemia should be considered if central cyanosis unresponsive to oxygen therapy occurs, especially if methemoglobin-inducing agents have been used. Calculated oxygen saturation and pulse oximetry are inaccurate in the setting of methemoglobinemia. The diagnosis can be confirmed by an elevated methemoglobin level of at least 10% is present. The development of methemoglobinemia is dose-related.

Management of methemoglobinemia: If methemoglobinemia does not respond to administration of oxygen, clinically significant symptoms of methemoglobinemia should be treated with administration of a slow intravenous injection (over 5 minutes) of methylene blue at a dosage of 1-2 mg/kg body weight.

5.5 Anaphylaxis and Allergic-Type Reactions

Septocaine® contains sodium metabisulfite, a sulfite that may cause allergic-type reactions including anaphylactic symptoms and life-threatening or less severe asthmatic episodes in certain susceptible people. The overall prevalence of sulfite sensitivity in the general population is unknown. Sulfite sensitivity is seen more frequently in asthmatic than in non-asthmatic people.

6 ADVERSE REACTIONS

Reactions to articaine are characteristic of those associated with other amide-type local anesthetics. Adverse reactions to this group of drugs may also result from excessive plasma levels (which may be due to overdosage, unintentional intravascular injection, or slow metabolic degradation), injection technique, volume of injection, or hypersensitivity or they may be idiosyncratic.

6.1 Clinical Studies Experience

Because clinical trials are conducted under widely varying conditions, adverse reaction rates observed in the clinical trials of a drug cannot be directly compared to rates in the clinical trials of another drug and may not reflect the rates observed in practice.

The reported adverse reactions are derived from clinical trials in the United States and the United Kingdom. Table 2 displays the adverse reactions reported in clinical trials where 882 individuals were exposed to Septocaine® containing epinephrine 1:100,000. Table 3 displays the adverse reactions reported in clinical trials where 182 individuals were exposed to Septocaine® containing epinephrine 1:100,000 and 179 individuals were exposed to Septocaine® containing epinephrine 1:200,000.

Adverse reactions observed in at least 1% of patients:

Table 2: Adverse Reactions in Controlled Trials with an Incidence of 1% or Greater in Patients Administered Septocaine® containing Epinephrine 1:100,000

Body System/Reaction	Septocaine® containing epinephrine 1:100,000 (N=882) Incidence
<i>Body as a whole</i>	
Face Edema	13 (1%)
Headache	31 (4%)
Infection	10 (1%)
Pain	114 (13%)
<i>Digestive system</i>	
Gingivitis	13 (1%)
<i>Nervous system</i>	
Paresthesia	11 (1%)

Table 3: Adverse Reactions in Controlled Trials with an Incidence of 1% or Greater in Patients Administered Septocaine® containing Epinephrine 1:200,000 and Septocaine® containing Epinephrine 1:100,000

Reaction	Septocaine® with epinephrine 1:200,000 (N=179) Incidence	Septocaine® with epinephrine 1:100,000 (N=182) Incidence
Any adverse reaction	33 (18%)	35 (19%)
Pain	11 (6.1%)	14 (7.6%)
Headache	9 (5%)	6 (3.2%)
Positive blood 3 (1.6%) aspiration into syringe		6 (3.2%)
Swelling	3 (1.6%)	5 (2.7%)
Trismus	1 (0.5%)	3 (1.6%)
Nausea and emesis	3 (1.6%)	0 (0%)
Sleepiness	2 (1.1%)	1 (0.5%)
Numbness and tingling	1 (0.5%)	2 (1%)
Palpitation	0 (0%)	2 (1%)
Ear symptoms 1 (0.5%) (earache, otitis media)		2 (1%)
Cough, persistent cough	0 (0%)	2 (1%)

Adverse reactions observed in less than 1% of patients:

Table 4: Adverse Reactions in Controlled Trials with an Incidence of Less than 1% but Considered Clinically Relevant in Patients Administered Septocaine®

Body System	Reactions
Body as a Whole	Asthenia; back pain; injection site pain; burning sensation above injection site; malaise; neck pain
Cardiovascular System	Hemorrhage; migraine; syncope; tachycardia; elevated blood pressure
Digestive System	Dyspepsia; glossitis; gum hemorrhage; mouth ulceration; nausea; stomatitis; tongue edemas; tooth disorder; vomiting
Hemic and Lymphatic System	Ecchymosis; lymphadenopathy
Metabolic and Nutritional System	Edema; thirst
Musculoskeletal System	Arthralgia; myalgia; osteomyelitis
Nervous System	Dizziness; dry mouth; facial paralysis; hyperesthesia; increased salivation; nervousness; neuropathy; paresthesia; somnolence; exacerbation of Kearns-Sayre Syndrome
Respiratory System	Pharyngitis; rhinitis; sinus pain; sinus congestion
Skin and Appendages	Pruritus; skin disorder
Special Senses	Ear pain; taste perversion

6.2 Postmarketing Experience

The following adverse reactions have been identified during postapproval use of Septocaine®. Because these reactions are reported voluntarily from a population of uncertain size, it is not always possible to reliably estimate their frequency or establish a causal relationship to drug exposure.

Persistent paresthesias of the lips, tongue, and oral tissues have been reported with use of articaine hydrochloride, with slow, incomplete, or no recovery. These postmarketing events have been reported chiefly following nerve blocks in the mandible and have involved the trigeminal nerve and its branches.

Hypoesthesia has been reported with use of articaine, especially in pediatric age groups, which is usually reversible. Prolonged numbness can result in soft tissue injuries such as that of the lips and tongue in these age groups.

Ischemic injury and necrosis have been described following use of articaine with epinephrine and have been postulated to be due to vascular spasm of terminal arterial branches.

Paralysis of ocular muscles has been reported, especially after posterior, superior alveolar injections of articaine during dental anesthesia. Symptoms include diplopia, mydriasis, ptosis, and difficulty in abduction of the affected eye. These symptoms have been described as developing immediately after injection of the anesthetic solution and persisting one minute to several hours, with generally complete recovery.

7 DRUG INTERACTIONS

The administration of local anesthetic solutions containing epinephrine to patients receiving monoamine oxidase inhibitors, nonselective beta-adrenergic antagonists, or tricyclic antidepressants may produce severe, prolonged hypertension. Phenothiazines and butyrophenones may reduce or reverse the pressor effect of epinephrine. Concurrent use of these agents should be avoided; however, in situations when concurrent therapy is necessary, careful patient monitoring is essential [see *Warnings and Precautions (5.2)*].

8 USE IN SPECIFIC POPULATIONS

8.1 Pregnancy

Teratogenic Effects - Pregnancy Category C.

There are no adequate and well-controlled studies in pregnant women with Septocaine®. Articaine hydrochloride and epinephrine (1:100,000) has been shown to increase fetal deaths and skeletal variations in rabbits when given in doses approximately 4 times the maximum recommended human dose (MRHD). Septocaine® should be used during pregnancy only if the potential benefit justifies the potential risk to the fetus.

In embryo-fetal toxicity studies in rabbits, 80 mg/kg, subcutaneously (approximately 4 times the MRHD based on body surface area) caused fetal death and increased fetal skeletal variations, but these effects may be attributable to severe maternal toxicity, including seizures, observed at this dose. In contrast, no embryo-fetal toxicities were observed when articaine and epinephrine (1:100,000) was administered subcutaneously throughout organogenesis at doses up to 40 mg/kg in rabbits and 80 mg/kg in rats (approximately 2 times the MRHD based on body surface area).

In pre- and postnatal developmental studies subcutaneous administration of articaine hydrochloride to pregnant rats throughout gestation and lactation, at a dose of 80 mg/kg (approximately 2 times the MRHD based on body surface area) increased the number of stillbirths and adversely affected passive avoidance, a measure of learning, in pups. This dose also produced severe maternal toxicity in some animals. A dose of 40 mg/kg (approximately equal to the MRHD on a mg/m² basis) did not produce these effects. A similar study using articaine and epinephrine (1:100,000) rather than articaine hydrochloride alone produced maternal toxicity, but no effects on offspring.z

8.3 Nursing Mothers

It is not known whether Septocaine® is excreted in human milk. Because many drugs are excreted in human milk, caution should be exercised when Septocaine® is administered to a nursing woman. When using Septocaine®, nursing mothers may choose to pump and discard breast milk for approximately 4 hours (based on plasma half life) following an injection of Septocaine® (to minimize infant ingestion) and then resume breastfeeding.

8.4 Pediatric Use

Safety and effectiveness of Septocaine® in pediatric patients below the age of 4 years have not been established. Safety of doses greater than 7 mg/kg (0.175 mL/kg) in pediatric patients has not been established. Safety and effectiveness was established in clinical trials with 61 pediatric patients between the ages of 4 and 16 years administered articaine hydrochloride 4% and epinephrine 1:100,000 injections. Fifty-one of these patients received doses from 0.76 mg/kg to 5.65 mg/kg (0.9 to 5.1 mL) for simple dental procedures and 10 patients received doses between 0.37 mg/kg and 7.48 mg/kg (0.7 to 3.9 mL) for complex dental procedures. Approximately 13% of these pediatric patients required additional injections of anesthetic for complete anesthesia. Dosages in pediatric patients should be reduced, commensurate with age, body weight, and physical condition [see *Dosage and Administration (2.2)*].

8.5 Geriatric Use

In clinical trials, 54 patients between the ages of 65 and 75 years, and 11 patients 75 years and over received Septocaine® containing epinephrine 1:100,000. Among all patients between 65 and 75 years, doses from 0.43 mg/kg to 4.76 mg/kg (0.9 to 11.9 mL) were administered to 35 patients for simple procedures and doses from 1.05 mg/kg to 4.27 mg/kg (1.3 to 6.8 mL) were administered to 19 patients for complex procedures. Among the 11 patients ≥ 75 years old, doses from 0.78 mg/kg to 4.76 mg/kg (1.3 to 11.9 mL) were administered to 7 patients for simple procedures and doses of 1.12 mg/kg to 2.17 mg/kg (1.3 to 5.1 mL) were administered to 4 patients for complex procedures.

Approximately 6% of patients between the ages of 65 and 75 years and none of the 11 patients 75 years of age or older required additional injections of anesthetic for complete anesthesia compared with 11% of patients between 17 and 65 years old who required additional injections.

No overall differences in safety or effectiveness were observed between elderly subjects and younger subjects, and other reported clinical experience has not identified differences in responses between the elderly and younger patients, but greater sensitivity of some older individuals cannot be ruled out.

8.6 Renal/Hepatic Insufficiency

No studies have been performed with articaine hydrochloride 4% and epinephrine 1:200,000 injection or articaine hydrochloride 4% and epinephrine 1:100,000 injection in patients with renal or hepatic dysfunction [see *Warnings and Precautions (5.2)*].

10 OVERDOSAGE

Acute emergencies from local anesthetics are generally related to high plasma levels encountered during therapeutic use of local anesthetics or to unintended subarachnoid injection of local anesthetic solution [see *Warnings and Precautions (5.1, 5.2)*].

The first consideration is prevention, best accomplished by careful and constant monitoring of cardiovascular and respiratory vital signs and the patient's state of consciousness after each local anesthetic injection. At the first sign of change, oxygen should be administered.

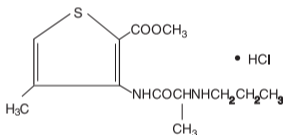
The first step in the management of convulsions, as well as hypo-ventilation, consists of immediate attention to the maintenance of a patent airway and assisted or controlled ventilation as needed. The adequacy of the circulation should be assessed. Should convulsions persist despite adequate respiratory support, treatment with appropriate anticonvulsant therapy is indicated. The practitioner should be familiar with the use of anticonvulsant drugs, prior to the use of local anesthetics. Supportive treatment of circulatory depression may require administration of intravenous fluids and, when appropriate, a vasopressor.

If not treated immediately, both convulsions and cardiovascular depression can result in hypoxia, acidosis, bradycardia, arrhythmias, and/or cardiac arrest. If cardiac arrest should occur, standard cardiopulmonary resuscitative measures should be instituted.

For additional information about overdose treatment, call a poison control center (1-800-222-1222).

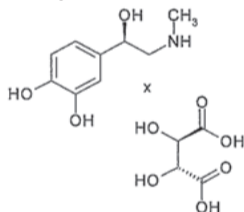
11 DESCRIPTION

Septocaine® injection is a sterile, aqueous solution that contains articaine HCl 4% (40 mg/mL) and epinephrine bitartrate in an epinephrine 1:200,000 or epinephrine 1:100,000 strength. Articaine HCl is an amino amide local anesthetic, chemically designated as 4-methyl-3-[2-(propylamino)-propionamido]-2-thiophene-carboxylic acid, methyl ester hydrochloride and is a racemic mixture. Articaine HCl has a molecular weight of 320.84 and the following structural formula:



Articaine HCl has a partition coefficient in n-octanol/Sørensen buffer (pH 7.35) of 17 and a pKa of 7.8.

Epinephrine bitartrate, (-)-1-(3,4-Dihydroxyphenyl)-2-methylamino-ethanol (+) tartrate (1:1) salt, is a vasoconstrictor that is added to articaine HCl in a concentration of 1:200,000 or 1:100,000 (expressed as free base). It has a molecular weight of 333.3 and the following structural formula:



Septocaine® contains articaine HCl (40 mg/mL), epinephrine (1:200,000 or 1:100,000) (as epinephrine bitartrate), sodium chloride (1.6 mg/mL), and sodium metabisulfite (0.5 mg/mL). The product is formulated with a 15% overage of epinephrine. The pH is adjusted with sodium hydroxide.

12 CLINICAL PHARMACOLOGY

12.1 Mechanism of Action

Articaine HCl is an amide local anesthetic. Local anesthetics block the generation and conduction of nerve impulses, presumably by increasing the threshold for electrical excitation in the nerve, by slowing the propagation of the nerve impulse, and by reducing the rate of rise of the action potential. In general, the progression of anesthesia is related to the diameter, myelination, and conduction velocity of the affected nerve fibers. Epinephrine is a vasoconstrictor added to articaine HCl to slow absorption into the general circulation and thus prolong maintenance of an active tissue concentration.

12.2 Pharmacodynamics

Clinically, the order of loss of nerve function is as follows: (1) pain; (2) temperature; (3) touch; (4) proprioception; and (5) skeletal muscle tone.

The onset of anesthesia has been shown to be within 1 to 9 minutes of injection of Septocaine®. Complete anesthesia lasts approximately 1 hour for infiltrations and up to approximately 2 hours for nerve block.

Administration of Septocaine® results in a 3- to 5-fold increase in plasma epinephrine concentrations compared to baseline; however, in healthy adults it does not appear to be associated with marked increases in blood pressure or heart rate, except in the case of accidental intravascular injection [see *Warnings and Precautions (5.1)*].

12.3 Pharmacokinetics

Absorption: Following dental injection by the submucosal route of an articaine solution containing epinephrine 1:200,000, articaine reaches peak blood concentration about 25 minutes after a single dose injection and 48 minutes after three doses. Peak plasma levels of articaine achieved after 68 and 204 mg doses are 385 and 900 ng/mL, respectively.

Following intraoral administration of a near maximum dose of 476 mg, articaine reaches peak blood concentrations of 2037 and 2145 ng/mL for articaine solution containing epinephrine 1:100,000 and 1:200,000, respectively, approximately 22 minutes post-dose.

Distribution: Approximately 60 to 80% of articaine HCl is bound to human serum albumin and y-globulins at 37°C *in vitro*.

Metabolism: Articaine HCl is metabolized by plasma carboxylesterase to its primary metabolite, articaine acid, which is inactive. *In vitro* studies show that the human liver microsomal P450 isoenzyme system metabolizes approximately 5% to 10% of available articaine with nearly quantitative conversion to articaine acid.

Excretion: At the dose of 476 mg of articaine, the elimination half-life was 43.8 minutes and 44.4 minutes for articaine solution containing epinephrine 1:100,000 and 1:200,000, respectively. Articaine is excreted primarily through urine with 53-57% of the administered dose eliminated in the first 24 hours following submucosal administration. Articaine acid is the primary metabolite in urine. A minor metabolite, articaine acid glucuronide, is also excreted in urine. Articaine constitutes only 2% of the total dose excreted in urine.

Special Populations: No studies have been performed to evaluate the pharmacokinetics of Septocaine® injection in pediatric subjects. There is insufficient information to determine whether the pharmacokinetics of Septocaine® injection differs by race.

13 NONCLINICAL TOXICOLOGY

13.1 Carcinogenesis, Mutagenesis, Impairment of Fertility

Studies to evaluate the carcinogenic potential of articaine HCl in animals have not been conducted. Five standard mutagenicity tests, including three *in vitro* tests (the nonmammalian Ames test, the mammalian Chinese hamster ovary chromosomal aberration test, and a mammalian gene mutation test with articaine HCl) and two *in vivo* mouse micronucleus tests (one with articaine and epinephrine 1:100,000 and one with articaine HCl alone) showed no mutagenic effects.

No effects on male or female fertility were observed in rats for articaine and epinephrine 1:100,000 administered subcutaneously in doses up to 80 mg/kg/day (approximately 2 times the MRHD based on body surface area).

14 CLINICAL STUDIES

Three randomized, double-blind, active-controlled studies were designed to evaluate effectiveness of Septocaine® containing epinephrine 1:100,000 as a dental anesthetic. Patients ranging in age from 4 years to over 65 years old underwent simple dental procedures such as single uncomplicated extractions, routine operative procedures, single apical resections, and single crown procedures, or complex dental procedures such as multiple extractions, multiple crowns and/or bridge procedures, multiple apical resections, alveolectomies, mucogingival operations, and other surgical procedures on the bone. Septocaine® containing epinephrine 1:100,000 was administered as submucosal infiltration and/or nerve block. Efficacy was measured immediately following the procedure by having the patient and investigator rate the patient's procedural pain using a 10 cm visual analog scale (VAS), in which a score of zero represented no pain and a score of 10 represented the worst pain imaginable. Mean patient and investigator VAS pain scores were 0.3-0.4 cm for simple procedures and 0.5-0.6 cm for complex procedures.

Four randomized, double-blind, active-controlled studies were performed comparing Septocaine® containing epinephrine 1:100,000 versus Septocaine® containing epinephrine 1:200,000. The first two studies used electric pulp testers (EPT) to evaluate the success rate (maximum EPT value within 10 minutes), onset, and duration of Septocaine® containing epinephrine 1:100,000 versus Septocaine® containing epinephrine 1:200,000 and articaine solution without epinephrine in healthy adults between 18 and 65 years old. Results indicated that the anesthetic characteristics of the 1:100,000 and 1:200,000 formulations are not significantly different.

A third study compared the difference in visualization of the surgical field after administration of Septocaine® containing epinephrine 1:100,000 versus Septocaine® containing epinephrine 1:200,000 during bilateral maxillary periodontal surgeries in patients ranging from 21 to 65 years old. Septocaine® containing epinephrine 1:100,000 provided better visualization of the surgical field and less blood loss during the procedures. In a fourth study, designed to assess and compare cardiovascular safety, when the maximum dose of each formulation was administered, no clinically relevant differences in blood pressure or heart rate between formulations were observed.

15 REFERENCES

Kaplan, EL, editor. Cardiovascular disease in dental practice. Dallas; American Heart Association; 1986.

16 HOW SUPPLIED/STORAGE AND HANDLING

Septocaine® (articaine HCl and epinephrine) Injection is available in 1.7 mL single use glass cartridges, packaged in boxes of 50 cartridges in the following two strengths:

- Septocaine® containing articaine HCl 4% (40 mg/mL) and epinephrine 1:200,000 (as epinephrine bitartrate 0.009 mg/mL) (NDC 0362-9048-02)
- Septocaine® containing articaine HCl 4% (40 mg/mL) and epinephrine 1:100,000 (as epinephrine bitartrate 0.018 mg/mL) (NDC 0362-9049-02)

Storage and Handling

Store at controlled room temperature 25°C (77°F) with brief excursions permitted between 15° and 30°C (59°F-86°F) [see USP Controlled Room Temperature]. Protect from light. Do Not Freeze.

For chemical disinfection of the carpule, either isopropyl alcohol (91%) or ethyl alcohol (70%) is recommended. Many commercially available brands of isopropyl (rubbing) alcohol, as well as solutions of ethyl alcohol not of U.S.P. grade, contain denaturants that are injurious to rubber and therefore are not to be used.

Parenteral drug products should be inspected visually for particulate matter and discoloration prior to administration, whenever solution and container permit.

17 PATIENT COUNSELING INFORMATION

Loss of Sensation and Muscle Function:

- Inform patients in advance of the possibility of temporary loss of sensation and muscle function following infiltration and nerve block injections [see *Adverse Reactions (6.2)*].
- Instruct patients not to eat or drink until normal sensation returns.

Manufactured for SEPTODONT
Louisville, CO 80027
by Novocol Pharmaceutical of Canada Inc.
Cambridge, Ontario, Canada N1R 6X3





DATE: _____ SIGNATURE: _____

NOM DU PRODUIT / PRODUCT NAME: A100 AND A200 SEPTOCAINE (US) I
NUMÉRO DU PRODUIT / PRODUCT NUMBER: 2552-3
N° CODE À BARRES / BARCODE NO.: 2552-3

COULEUR(S) / COLOR(S):

#1

F

B

NOIR/BLACK

APPROBATION / APPROVAL
NOVOCOL PHARMACEUTICALS INC

SPÉCIFICATIONS

TYPE DE PAPIER / PAPER TYPE: OFFSET
POIDS DU PAPIER / PAPER WEIGHT: 35 LB, 70 M
DIMENSIONS (MM): À PLAT / FLAT: 184,15 x 508
PLIÉ / FOLDED: 184,15 x 254
POINTS DE COLLE / GLUE SPOTS: N/A
FEUILLET PLIÉ / FOLDED LEAFLET:

- ANGLAIS / ENGLISH VISIBLE
 FRANÇAIS / FRENCH VISIBLE
 AUTRE / OTHER VISIBLE

APP: _____ DATE: _____

APP: _____ DATE: _____

APP: _____ DATE: _____