

# Maxso®

## X99L

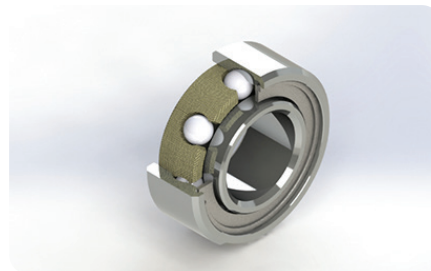
### Electric Handpieces

Beyes Maxso Series contra-angles adopts the latest technology to increase productivity and durability to provide the highest value to end users. It creates the next standard for the industry. Maxso Series contra-angles have also been designed without compromise paying attention to every last detail. Best possible access to the operating field and maximum visibility were the most important criteria during the design process of the instrument body. Unparalleled reliability and superior operator and patient comfort reflect the expertise behind every model of Maxso series.



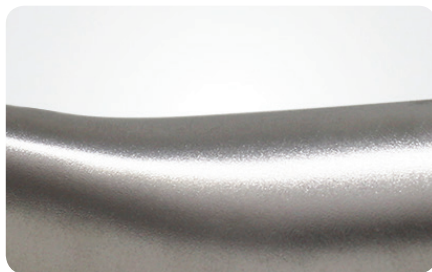
#### Cellular Glass

Compact glass rod for outstanding illumination of the treatment site.



#### Ceramic Ball Bearing

Quiet operation to reduce anxiety.



#### Titanium

Durable instrument construction with exceptional service life.



#### Clean Head System

Eliminate cross contamination.

## Key Specification

<b>Gear Ratio</b>	1:5 Increaser
<b>Designed For</b>	FG burs (Ø1.6)
<b>Head Size</b>	H12 x Ø10 mm
<b>Water Spray</b>	Quattro
<b>Body Material</b>	Titanium
<b>Max Speed</b>	200,000 RPM
<b>Illumination</b>	25,000 Lux
<b>Motor connection</b>	ISO E-Type

## Order Info

### Fiber Optic

**Code:** SL3025

**Model:** X99L



**Beyes**<sup>®</sup>  
The Next Standard

**Beyes Dental Canada Inc.**  
23-595 Middlefield Road  
Toronto, Ontario, M1V 3S2  
Canada  
**Tel:** 1-416-281-1888  
**Email:** info@beyes.ca  
**Website:** www.beyes.ca

Your Dealer for Beyes Products

Scan the QR code for  
more information on X99



Printed in Canada  
Document #: ENB020  
Rev.2 /08.08.19

© Beyes Canada Inc. 2019. All Rights Reserved.  
Specifications are subject to change without notice.  
All brands are holders of their respective trademarks.  
All Beyes products are manufactured in strict compliance  
with Health Canada regulators ensuring quality.  
Manufacturing facility is ISO 13485 certified under Canadian  
Medical Devices Conformity Assessment System (CMDCAS).