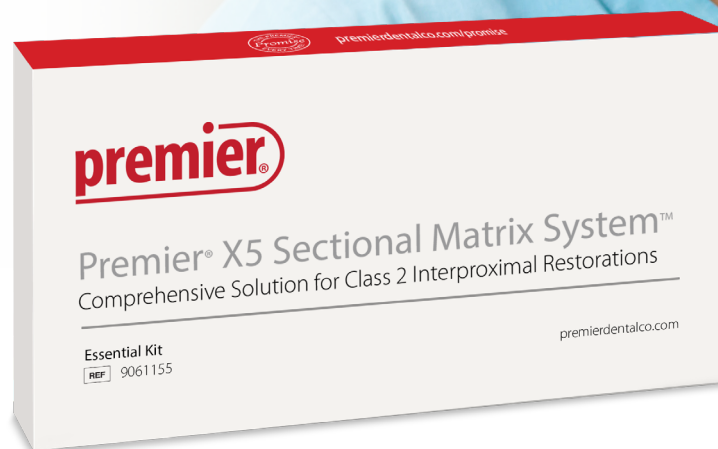


Reliable Results
Convenience & Value

An innovative, superior option is here!



new! Premier® X5 Sectional Matrix System™

Introducing the Premier® X5 Sectional Matrix System™ - a complete, high quality, 5-component sectional matrix system designed to achieve accurate Class 2 composite restorations with smooth contours every time.

Premier's "X" factor is a universal ring made from a proprietary resin material that's autoclavable up to 5 times. The Premier X5 ring has exceptional strength for optimal separation force and stability to deliver perfect, tight interproximal contacts. Unlike Tofflemire retainers that are difficult to position, leave poor contacts, and cause patient discomfort, the Premier X5 Sectional Matrix System is easy to use and is priced at just a fraction of the expensive NiTi ring systems.

There's never been a better time to make the switch to Premier X5 Sectional Matrix System and save without compromising quality results.



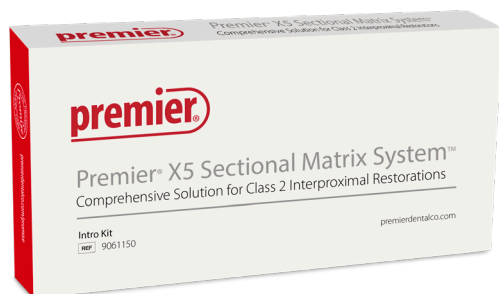
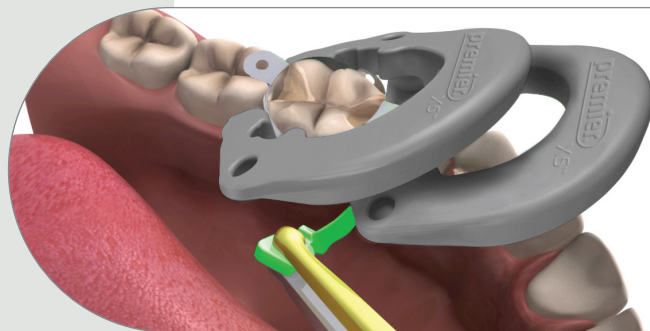
premier Inspired solutions
for daily dentistry®

Premier® Dental Products Company • 888-670-6100 • premierdentalco.com

©2021 Premier Dental Co. | All Rights Reserved

new! Premier® X5 Sectional Matrix System™

- ✓ Affordable, reusable proprietary resin rings - up to 5 autoclave cycles
- ✓ Anatomically shaped matrices allows for proper contouring
- ✓ Designed to deliver perfect tight contacts every time
- ✓ Cost effective when switching from expensive NiTi ring systems
- ✓ Compatible with other systems' wedges and matrices
- ✓ Easy to use compared to Tofflemire retainers



9061150 X5 Intro Kit

Contains:

(1) Matrix Pin Holder, (1) Matrix Ring Forceps,
(10) Matrix Rings (gray)

25 each:

Wedge - Small (yellow), Wedge - Medium (green),
Wedge - Large (blue), 3.5mm Matrix,
4.5mm Matrix, 5.5mm Matrix, 6.5mm Matrix

9061155 X5 Essential Kit

Contains:

(10) Matrix Rings (gray)

25 each:

Wedge - Small (yellow), Wedge - Medium (green),
Wedge - Large (blue), 3.5mm Matrix,
4.5mm Matrix, 5.5mm Matrix, 6.5mm Matrix

Reorder

-  9061190 X5 Matrix Ring (35)
-  9061170 X5 Wedge - Small (yellow) (100)
-  9061171 X5 Wedge - Medium (green) (100)
-  9061172 X5 Wedge - Large (blue) (100)
-  9061160 X5 3.5mm Matrix (25)
-  9061161 X5 4.5mm Matrix (80)
-  9061162 X5 5.5mm Matrix (80)
-  9061163 X5 6.5mm Matrix (80)



- 9061180 Matrix Pin Holder
- 9061181 Matrix Ring Forceps

premier® Inspired solutions
for daily dentistry®



Premier® Dental Products Company • 1710 Romano Drive, Plymouth Meeting, PA 19462, USA
Phone 888-670-6100 • 610-239-6000 • Fax 610-239-6171 • premierdentalco.com • E-mail: info@premierdentalco.com