

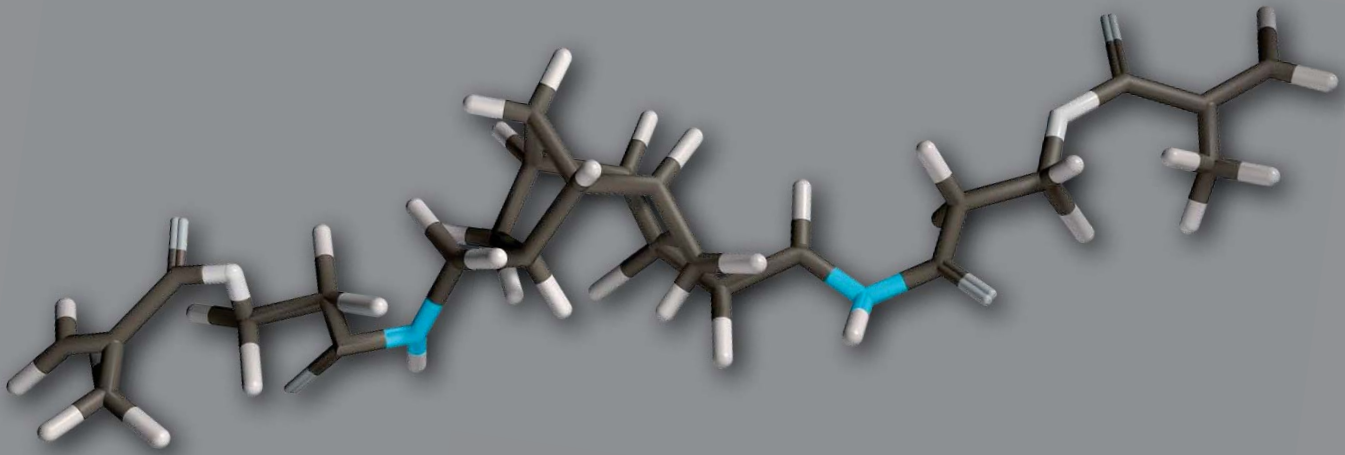


Venus Family of Composites The New Standard of Care

The most complete line of low-stress composites on the market, providing an unprecedented combination of low shrinkage stress, high durability and superior handling for esthetic brilliance without compromise.

**BisGMA
& BPA
FREE!**

Giving a hand to oral health.



ONE PROVEN CHEMISTRY – THREE VISCOSITIES.

The innovative urethane monomer chemistry of the Venus® Family of Composites sets the new standard of care with an unprecedented combination of **low shrinkage stress** and **high flexural strength**. This crucial combination protects restorations against fracture and secondary caries – still the main reason for direct restorative failure.

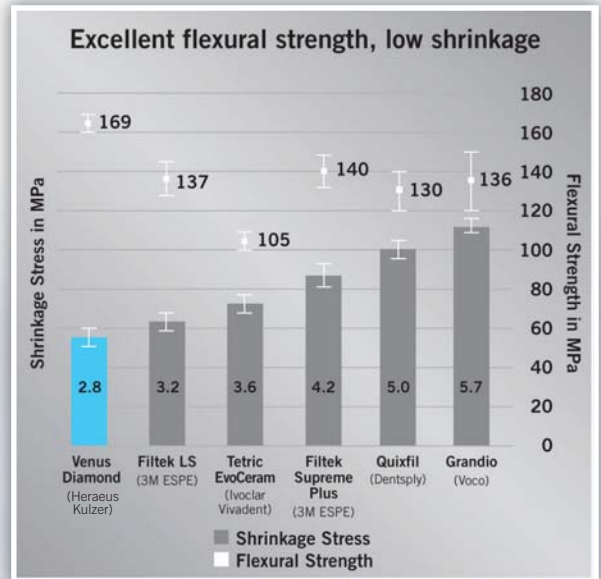
Venus Pearl, Venus Diamond, and Venus Diamond Flow may be used together or individually for long-lasting esthetic solutions that meet all of your restorative needs.

Venus Diamond®

Blending elegance and efficiency.

Offering a firmer, more packable consistency, **Venus Diamond** leads the industry in color adaptability with a patented formula that provides an outstanding natural look – replicating nature and mimicking tooth anatomy. Just one shade saves time and produces radiant results.

Along with superb color esthetics, this revolutionary nano-hybrid composite exhibits exceptional durability, superb handling, low shrinkage and low shrinkage stress.



The result: Venus Diamond is more flexible under stress and more durable over time.

Heraeus Kulzer R&D, Wehrheim, Germany. Data on file.

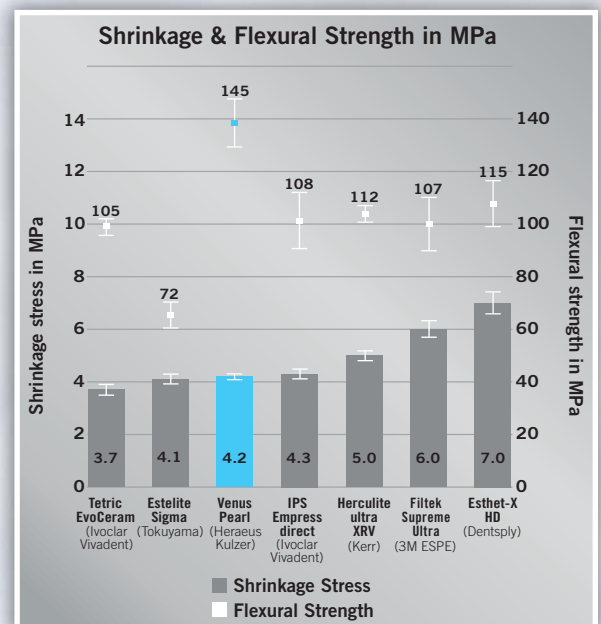
Venus® Pearl

Beauty beyond esthetics.

Venus Pearl is a universal nano-hybrid composite based on the innovative urethane monomer chemistry of Venus Diamond.

Venus Pearl offers the same combination of low shrinkage stress and high durability—in a creamy consistency. Simple and easy to use, the consistency of Venus Pearl is ideal for fine detailed work.

Its exceptional sculptability and high degree of polishability make Venus Pearl well suited for anterior as well as posterior restorations.



The result: Venus Pearl offers a combination of low shrinkage stress and high flexural strength that prevents fracture and secondary caries.

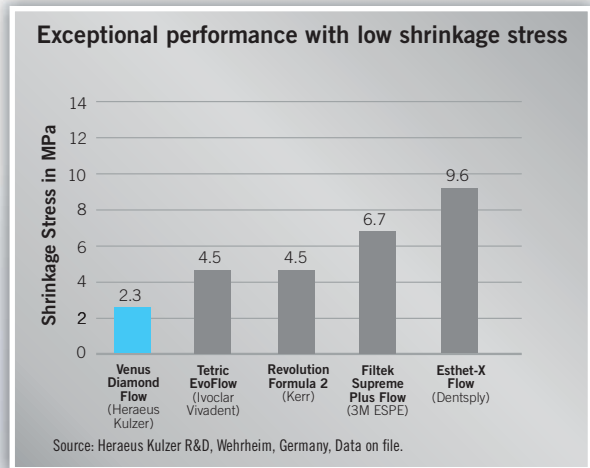
Heraeus Kulzer R&D, Wehrheim, Germany. Data on file.

Venus Diamond® Flow

Seeing is believing.

Venus Diamond Flow is ideal as a base or liner, offering a Baseline White shade for blocking out dentin discoloration. Its thixotropic handling provides easy control.

- High radiopacity.
- Low shrinkage stress.
- High flexural strength.
- Superior shade adaptation.



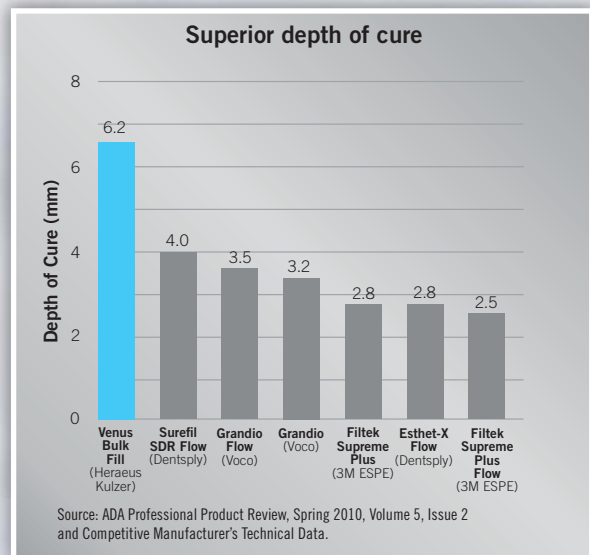
The result: Venus Diamond Flow exhibits lower shrinkage stress than leading flowables ensuring better marginal integrity.

Venus® Bulk Fill

Seeing is believing.

Venus Bulk Fill is an advanced posterior restorative solution that provides dentists with a faster, easier technique than incremental layering. The result—a reduction in chair time, and a more efficient and cost effective restoration.

- Compatibility with all methacrylate based bonding adhesives and composites.
- NEW Pediatric Kit with iBond Self Etch bonding agent for a quick and easy restoration.



The result: Venus Bulk Fill shows more than 4mm depth of cure.

Venus® Pearl

- 66048214 **Venus Pearl PLT Masters Kit** 10 x 0.2g PLT each of the shades A1, A2, HKA2.5, A3, A3.5, A4, 5 x 0.2g PLT each of the shades HKA5, B1, B2, B3, C1, C2, C3, D3, CL, AM, CO, YO, OLC, OMC, ODC, OXDC, BL, BXL, OB, GUM, 5 x 0.3g PLT of the shade CORE; 2 x 1.8g Venus Diamond Flow Syringe Baseline; Venus Family Shade Guide; Venus Pearl Layering Guide; Pictorial Card
- 66048211 **Venus Pearl PLT Basic Kit** 10 x 0.2g PLT each of the shades A1, A2, HKA2.5, A3, A3.5, A4, 1 x 2ml Bottle of iBOND® Total Etch; Venus Pearl Layering Guide; Pictorial Card
- 66048213 **Venus Pearl Syringe Basic Kit** 1 x 3g syringe each of the shades A1, A2, HKA2.5, A3, A3.5, A4, 1 x 2ml Bottle of iBOND® Total Etch; Venus Pearl Layering Guide; Pictorial Card
- 66055463 **Venus Pearl Shade Guide**



Shades	Syringe	PLT 20 x 0.2g	PLT 10 x 0.2g	Shades	Syringe	PLT 20 x 0.2g	PLT 10 x 0.2g	Shades	Syringe	PLT 20 x 0.2g	PLT 10 x 0.2g
A1	66048175	66048090		C1	66048185	66048150		BL (Bleach)	66048193		66048096
A2	66048176	66048141		C2	66048186	66048161		BXL (Bleach Extra Light)	66048194		66048097
A3	66048178	66048143		C3	66048187	66048162		OB (Opaque Bleach)	66048195		66048095
A3.5	66048179	66048144		D3	66048188	66048163		CL (Clear)	66048196		66048098
A4	66048180	66048145		HKA2.5	66048177	66048142		AM (Amber)	66048197		66048099
B1	66048182	66048147		HKA5	66048181	66048146		CO (Clear Opal)	66048198		66048100
B2	66048183	66048148		OLC	66048189		66048164	YO (Yellow Opal)	66048199		66048171
B3	66048184	66048149		OMC	66048190		66048165	CORE	66048200		66048172
				ODC	66048191		66048093	GUM	66048201		66048173

Venus Diamond®

- 66055476 **Venus Diamond PLT Basic Kit** 10 x 0.25g of the shades: A2, HKA2.5, A3, OLC, OMC, CL; 1 x 2ml Bottle of iBOND® Total Etch, Venus Diamond Layering Guide, Pictorial Card
- 66055475 **Venus Diamond Syringe Basic Kit** 1 x 4g syringe each of the shades: A2, HKA2.5, A3, OLC, OMC, CL; 1 x 2ml Bottle of iBOND® Total Etch, Venus Diamond Layering Guide, Pictorial Card
- 66039004 **Venus Diamond Shade Guide**

Shades	Syringe	PLT 20 x 0.25g	PLT 10 x 0.25g	Shades	Syringe	PLT 20 x 0.25g	PLT 10 x 0.25g	Shades	Syringe	PLT 20 x 0.25g	PLT 10 x 0.25g
A1	66035471	66039008		C2	66035481	66039018		BL (Bleach)	66035487		66039025
A2	66035472	66039009		C3	66035482		66039019	BXL (Bleach Extra Light)	66035488		66039026
A3	66035474	66039011		D3	66035483		66039020	OB (Opaque Bleach)	66035489		66039024
A3.5	66035475	66039012		HKA2.5	66035473	66039010		CL (Clear)	66035490		66039027
A4	66035476		66039013	HKA5	66035477		66039014	AM (Amber)	66035491		66039028
B1	66035478	66039015		OLC	66046735		66046731	CO (Clear Opal)	66035492		66039029
B2	66035479	66039016		OMC	66046736		66046732	YO (Yellow Opal)	66035493		66039030
B3	66035480		66039017	ODC	66046737		66046733				

Venus Diamond® Flow

- 66040353 **Venus Diamond Flow Syringe Assortment**
1 x 1.8g syringe each of shades A1, A2, A3, and Baseline
- 66040367 **Venus Diamond Flow PLT Assortment**
10 x 0.2g each of shades A1, A2, A3, and Baseline

Shades	Syringe	PLT 20 x 0.2g	Shades	Syringe	PLT 20 x 0.2g
A1	66040354	66040368	HKA2.5	66040357	66040370
A2	66040355	66040369	HKA5	66040361	66040374
A3	66040358	66040371	OM (Opaque Medium)	66040363	66040376
A3.5	66040359	66040372	CL (Clear)	66040364	66040377
A4	66040360	66040373	BXL (Bleach Extra Light)	66040365	66040378
B2	66040362	66040375	Baseline	66041052	66041051

Venus® Supra

- 66039110 **Venus Supra Kit**
(10 polishers: each of all five shapes as pre- and high gloss polishers)

Refills	Item Number
Cup	66039161
Disk	66039162
Flame	66039163
Large Cup	66039164
Large Flame	66039165

Venus® Bulk Fill

- 66057342 **Venus Bulk Fill Syringe Pediatric Kit** 4 x 1.8 g syringes Venus Bulk Fill – universal shade, 1 x 2 ml bottle of iBOND Self Etch, 1 of 6 finger puppets
- 66044743 **Venus Bulk Fill PLT Refill** 10 x 0.2 g PLTs Venus Bulk Fill – universal shade
- 66046795 **Venus Bulk Fill Syringe Refill** 1 x 1.8 g syringe Venus Bulk Fill – universal shade

